



COUPLERS

The Speedway Coupling System has been designed to prevent slip between connected components – a common problem for slotted cable ladder systems when under load.

The slot pattern in the ladder sides can be combined with the slot pattern in the couplers and integral couplers to create a pattern of squares; these square patterns can also be formed irrespective of where straight ladders are cut to length to suit site installation requirements. The specially designed Vantrunk square shouldered bolt interlocks into this pattern of squares to create a slip-resistant connection.

The Speedway Coupler has a profile which exactly matches the unique profile of the Speedway Ladder (& Fitting side walls) to give a high performance connection which securely holds the connected components together.

All standard Speedway Couplers are supplied singly and come complete with all necessary fixings. i.e. specially designed domed head M10X20 cup square bolts (eliminating sharp edges) and M10 Serrated Flange Nuts as standard.

ACCREDITED TO THE
FOLLOWING STANDARD



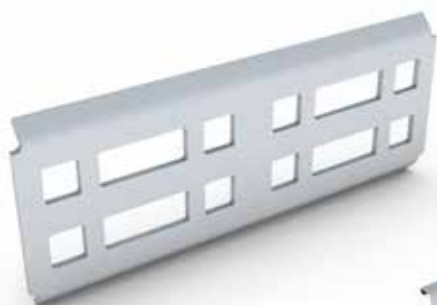
SW4
System Type

CS
Coupler Type

GA
Finish

SW4 Straight Coupler

Ref.SW4/CS



Part Number

SW4/CS/O

Finishes & Materials:



Supplied with:

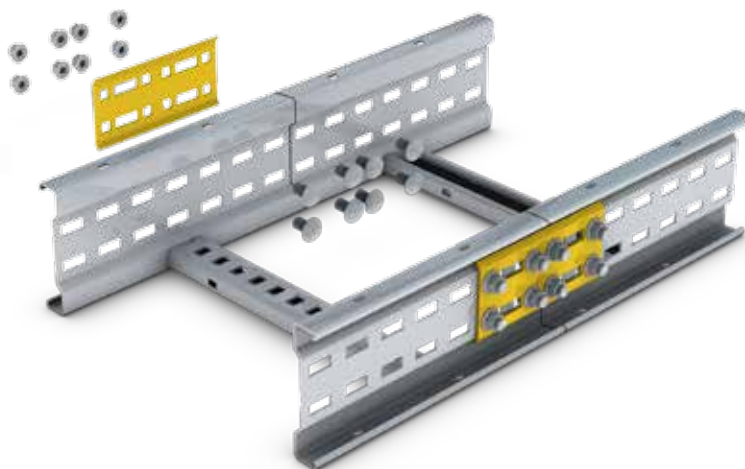
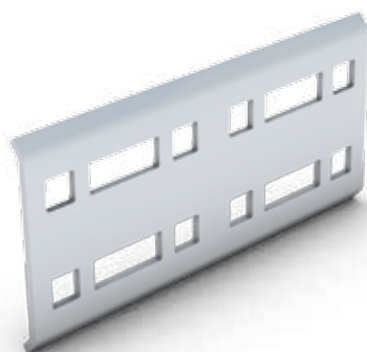


Showing assembly detail onto ladder. Supplied with 4 fixings per coupler

O= Select a Finish & Material

SW5 Straight Coupler

Ref.SW5/CS



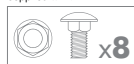
Part Number

SW5/CS/O

Finishes & Materials:



Supplied with:

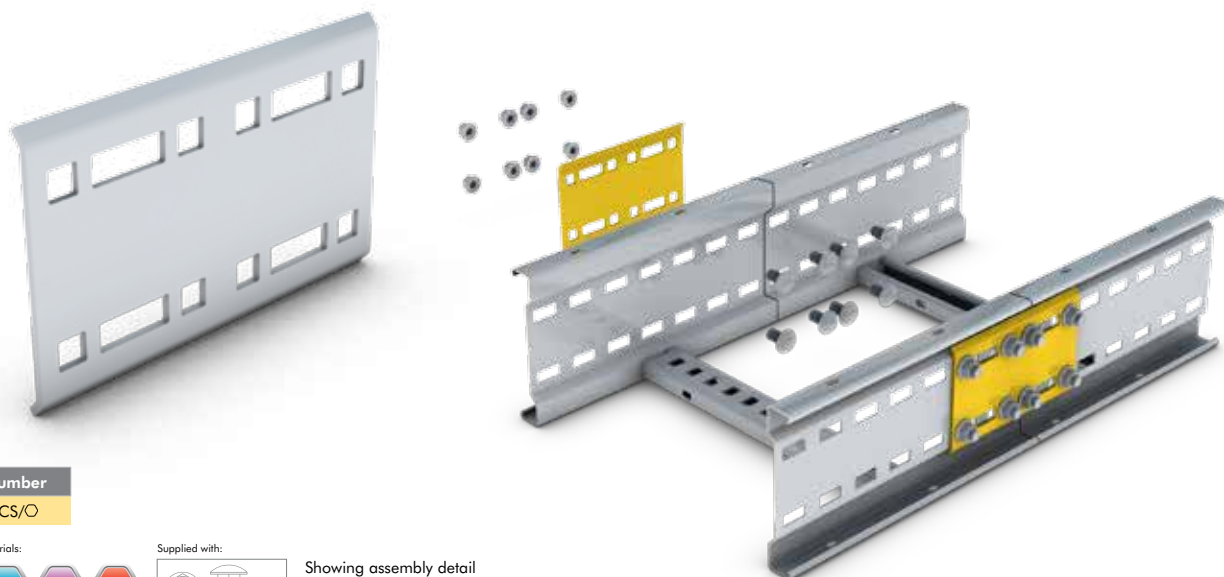


Showing assembly detail onto ladder. Supplied with 8 fixings per coupler

O= Select a Finish & Material

SW6 Straight Coupler

Ref.SW6/CS



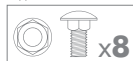
Part Number

SW6/CS/O

Finishes & Materials:



Supplied with:



Showing assembly detail
onto ladder. Supplied with
8 fixings per coupler

○ = Select a Finish & Material

Horizontal Adjustable Couplers

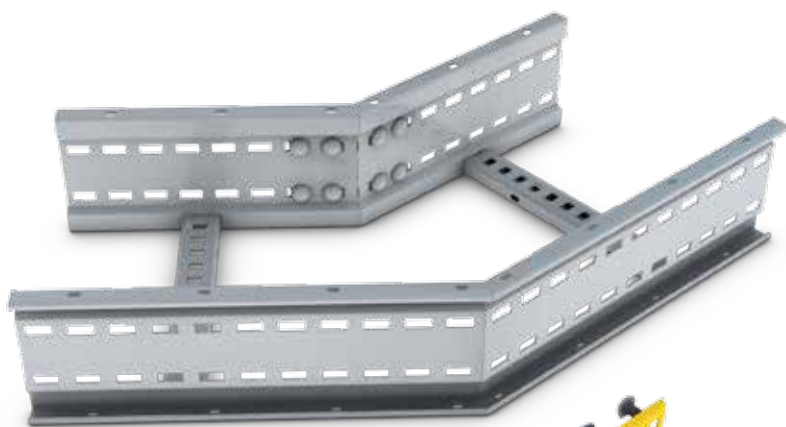
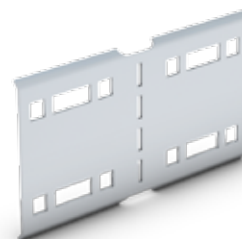
Ref.HAC



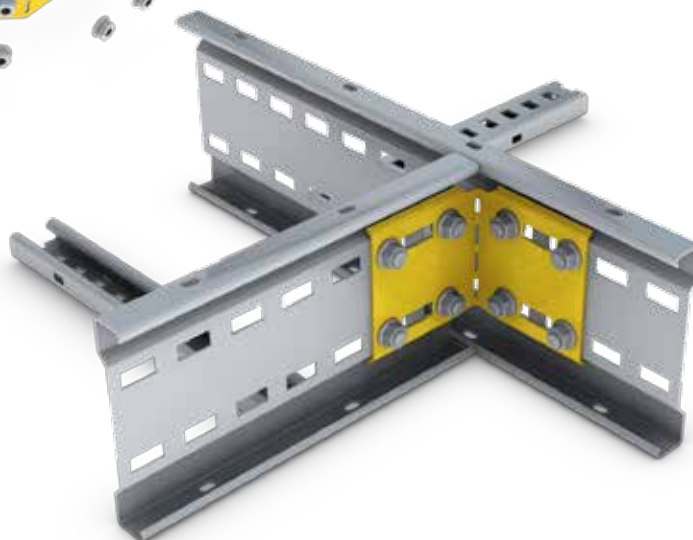
Speedway Horizontal Adjustable Couplers (HAC's) are used to join straight ladder and fittings where these need to be connected at offset angles in the same horizontal or vertical plane. When connecting a HAC to a cable ladder fitting please connect via a Fitting to Fitting Coupler (FFC), turn to page 73 for details.

Speedway Horizontal Adjustable Couplers are supplied singly and come complete with all necessary ladder fixing sets.

The Speedway Horizontal Adjustable Coupler is supplied flat and has easi-bend slots which allow the coupler to be bent on site to any angle to connect two cable ladder runs to form 'T' & 'Y' intersections.



Horizontal adjustable couplers
shown as a pair in use to create an offset
connection between two ladders



Horizontal adjustable coupler
shown formed to 90° to join a ladder
to a main run

Part Number

SWΔ/HAC/O

Finishes & Materials:



Supplied with:



Δ= Select a Ladder Type ○= Select a Finish & Material

Vertical Adjustable Couplers



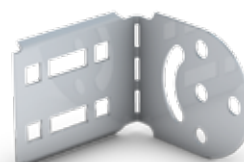
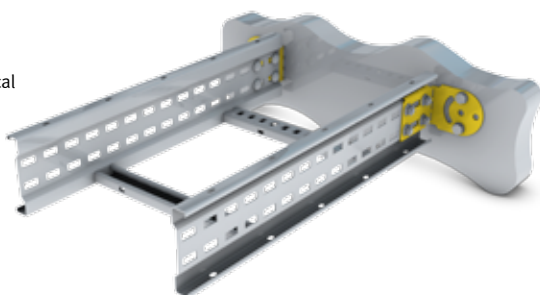
Ref. VAC

Speedway Vertical Adjustable couplers (VAC) are used to join straight ladder and fittings where these need to be connected at offset angles when these lie in different planes. When connecting a VAC to a cable ladder fitting please connect via a Fitting to Fitting Coupler (FFC), turn to page 73 for details.

Speedway Vertical Adjustable couplers are supplied singly and come complete with all necessary ladder fixing sets. Each vertical adjustable coupler comprises of two half plates complete with all necessary pivot fixings.

The arrangement of the pivot holes and elongated slots allows for infinite angular adjustment to suit specific site requirements. The vertical adjustable coupler features easi-bend slots which allow the couplers to be adjusted on site to create combined horizontal & vertical offset connections, ladder connections onto the side wall of a main run to form tees, or straight ladder & fitting connections directly to a floor or wall.

Vertical Adjustable Coupler
 Half shown bent to 90° and connecting a ladder to a vertical structure



Vertical Adjustable Coupler
 Shown connecting two ladders in the vertical plane



Vertical Adjustable Coupler
 Shown bent to 90° and connecting an angled ladder to a horizontal ladder



Part Number

SW△/VAC/○

Finishes & Materials:



Supplied with:



x8

△ = Select a Ladder Type ○ = Select a Finish & Material

Horizontal Hinged Couplers

Ref.HHC



Speedway Horizontal Hinged Couplers (HHC's) are offered as an alternative to the HAC. Speedway Horizontal Hinged Couplers are supplied singly and come complete with all necessary ladder fixing sets.

The Speedway Horizontal Hinged Coupler is supplied as an assembly allowing the coupler to be hinged to any angle to connect two cable ladder runs to form 'T' & 'Y' intersections.



Part Number

SW△/HHC/○

Finishes & Materials:



Supplied with:



Showing assembly detail onto ladder. Supplied with 8 fixings per coupler

△= Select a Ladder Type ○= Select a Finish & Material

Short & Long Adjustable Couplers



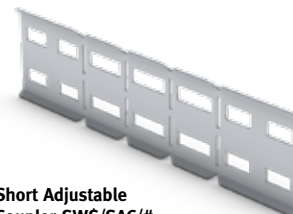
Ref.SAC & LAC

Speedway Short and Long Adjustable Couplers are used to create custom reductions in width during installation & to convert equal tees and crosses into unequal tees and crosses when used with a Fitting to Fitting Coupler (FFC).

Speedway Short and Long Adjustable Couplers are supplied singly and come complete with all necessary ladder fixing sets. Each adjustable coupler has 50mm long segments with easibend slots which allow the couplers to be adjusted on site to suit specific installation requirements.

Short adjustable couplers allow reductions of up to & including 150mm per coupler. Long adjustable couplers allow reductions of up to & including 300mm per coupler.

A single short or long adjustable coupler can be used in conjunction with a standard coupler to create an offset connection between two ladders or fittings of differing widths. For concentric reductions, two short or long adjustable couplers are required.

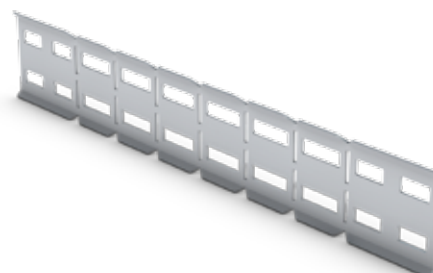


Short Adjustable Coupler SW\$SAC/#

Supplied flat & complete with all ladder fixings

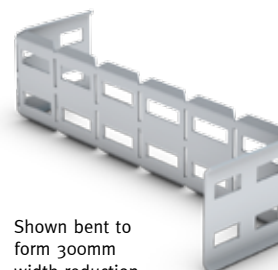


Shown bent to form 150mm width reduction

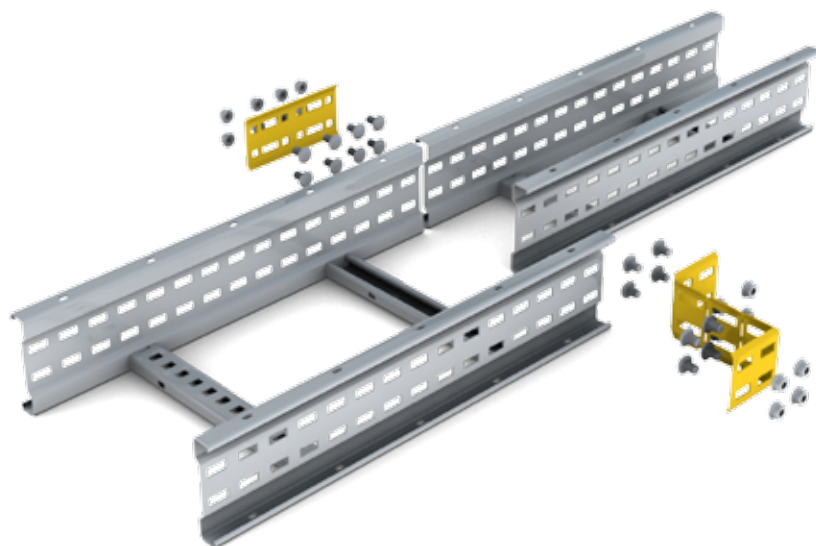


Long Adjustable Coupler SW\$LAC/#

Supplied flat & complete with all ladder fixings



Shown bent to form 300mm width reduction



Part Number	Part
SW△/SAC/○	Short Adjustable Coupler
SW△/LAC/○	Long Adjustable Coupler

Finishes & Materials:



Supplied with:



△ = Select a Ladder Type ○ = Select a Finish & Material

Expansion Couplers

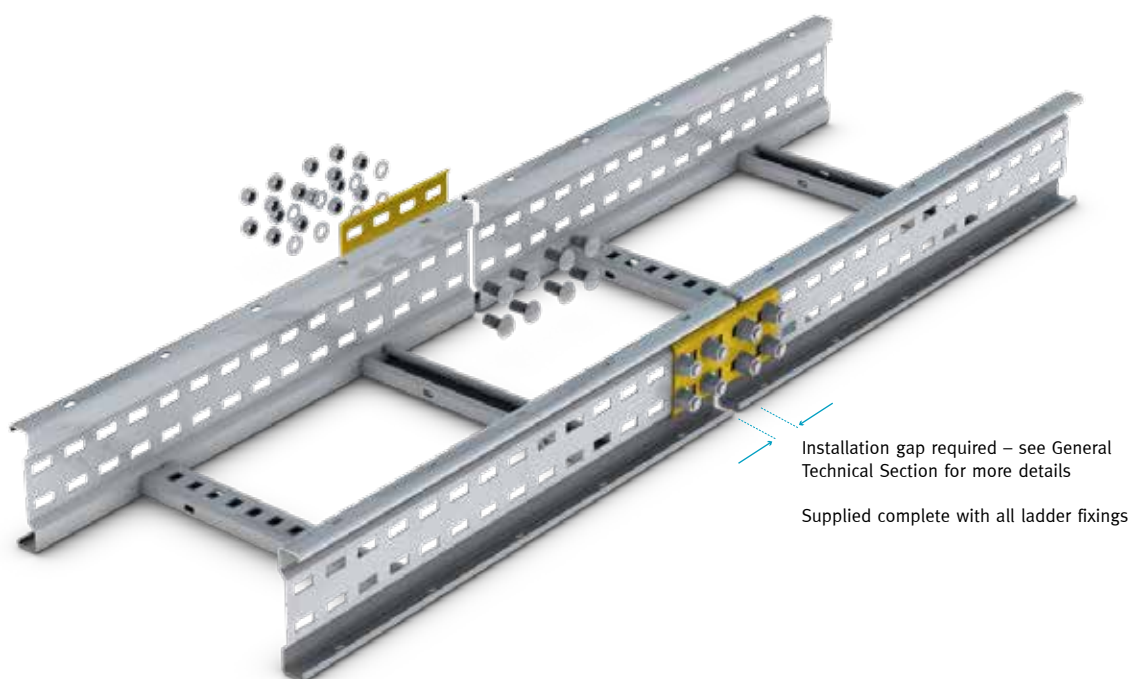
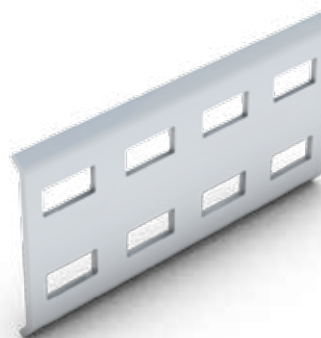
Ref.EXP

Speedway Expansion Couplers (EXP) are recommended for those installations where the maximum and minimum temperatures are such that the expansion and contraction of the cable ladder installation is a consideration.

Each Expansion Coupler is designed to allow for a maximum movement of 28mm. Speedway expansion couplers are supplied singly and come complete with all necessary ladder fixings (8 fixings supplied with each coupler).

The Expansion Coupler should not be installed without a support either side of the expansion joint within 600mm.

Specific recommendations covering the spacing of expansion couplers and the setting gap at the time of installation are given in the General Technical Section.



Part Number

SW△/EXP/○

Finishes & Materials:



Supplied with:



△ = Select a Ladder Type ○ = Select a Finish & Material

Full Moment Expansion Couplers

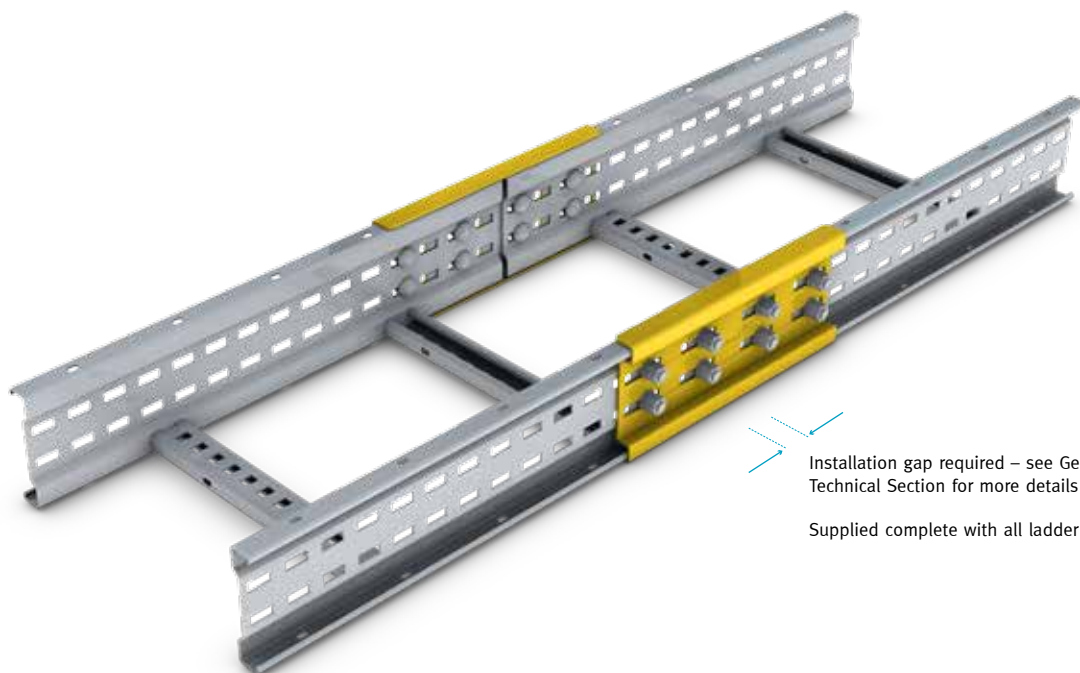
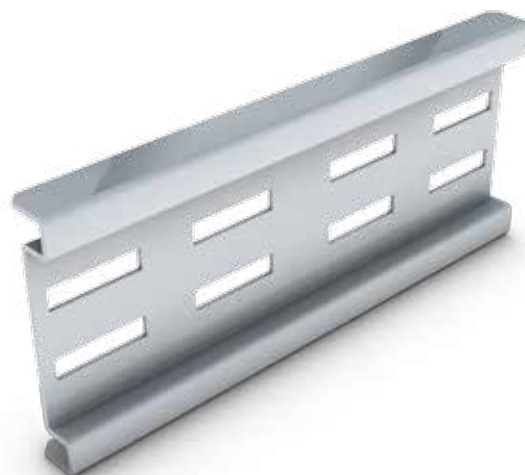
Ref.FME

Speedway Full Moment Expansion Couplers (FME) are recommended for those installations where the maximum and minimum temperatures are such that the expansion and contraction of the cable ladder installation is a consideration and where it is not possible to provide support within 600mm of the expansion joint.

Capable of carrying the full load of the Speedway Cable Ladder at the expansion joint, each expansion coupler is designed to allow for a maximum movement of 75mm.

Speedway Full Moment Expansion Couplers are supplied singly and come complete with all necessary ladder fixings (8 fixing sets per coupler).

Specific recommendations covering the spacing of expansion couplers and the setting gap at the time of installation are given in the General Technical Section of the catalogue.



Installation gap required – see General Technical Section for more details

Supplied complete with all ladder fixings

Part Number

SW△/FME/○

Finishes & Materials:



Supplied with:



△ = Select a Ladder Type ○ = Select a Finish & Material

Fitting to Fitting Coupler

Ref.FFC

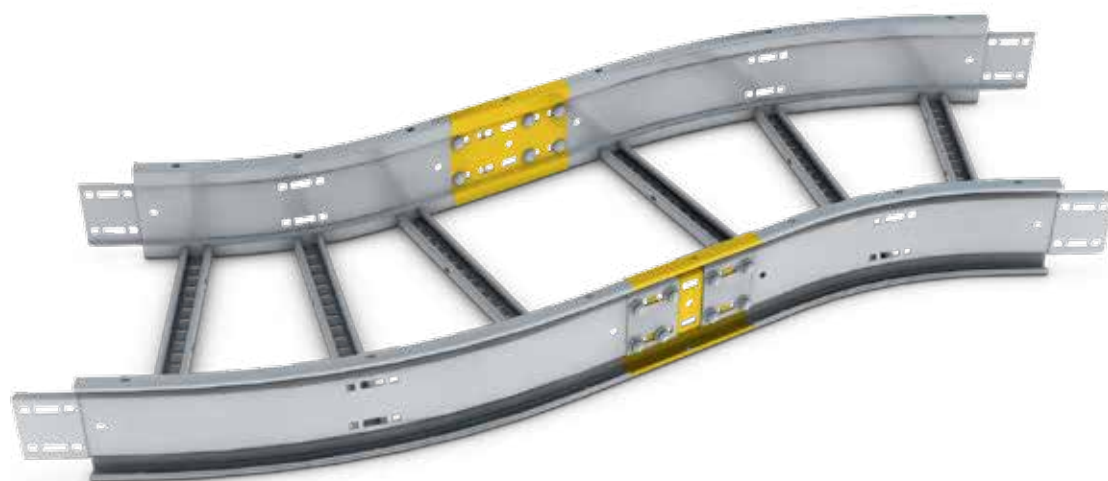
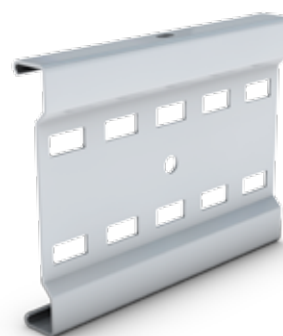
Speedway Fitting to Fitting Coupler (FFC) facilitates the joining of two abutting cable ladder fittings with Speedlok Integral Couplers. The fitting to fitting coupler is also used when turning an equal cross into an unequal Cross.

The Fitting to Fitting Coupler is based on the traditional Speedway Cable Ladder profile which is manufactured to a length of 200mm. The FFC is available across the Speedway product range in SW4, SW5 and SW6. To allow for two cable ladder fittings to be secured each FFC has 5 rows of slots, containing an 11mm hole in the middle row to allow fixing of an Earth Bonding Strap (ESB/o1)

To join two ladder fittings, first loose fit the FFC to one of the abutting fittings. Once the FFC is in place it will allow the secondary fitting to be positioned and fixed easily, tighten the fixings allowing the integral couplers to clamp onto the FFC profile thus providing a secure joining mechanism between the fittings.

An FFC will also be required when turning an Equal Cross (EC) into an Unequal Cross using a Reducer. Firstly the FFC should be secured loosely to the Cross, when both FFCs are in place secure the reducer. When all fixing locations are tightened the reducer will provide an immediate reduction to the equal cross. Please refer to Equal Crosses for more details.

The Fitting to Fitting coupler is supplied singly and does not require fixings. To allow for full mechanical and environmental protection of cables, a Fitting to Fitting Cover will be required.



Part Number

SW△/FFC/○

Finishes & Materials:



Supplied with:



△ = Select a Ladder Type ○ = Select a Finish & Material