

# VANTRUNK SPEEDWAY





# ***THE ENHANCED SPEEDWAY EXTREME CABLE LADDER SYSTEM***

THE SPEEDWAY CABLE LADDER SYSTEM REPRESENTS A MAJOR ADVANCE IN CABLE LADDER DESIGN, PROVIDING FASTER & EASIER INSTALLATION, GREATER CABLE FILL CAPACITY AND TOTAL FLEXIBILITY.



Quick Assembly  
Cable Ladder



Flexible  
Solutions



Rapid  
Installation  
Systems



Extreme  
Steel



Withstands  
extreme  
temperatures  
(-50° to +50°C)



# HOW TO ORDER

## CODE SYSTEM EXPLAINED

The information given on these pages should be used as a guide when ordering Speedway Cable Ladder, Fittings and Accessories. For more detailed information and examples refer to the relevant page within the catalogue.

### Speedway Straight Ladder

System Type	Ladder Type	Width	Finish & Material
eg. SW4	SL3	300	GA

### Speedway Fittings

System Type	Fitting Type	Width	Radius	Finish & Material
eg. SW4	FE30	300	450	GA

### Speedway Couplers

System Type	Coupler Type	Finish & Material
eg. SW4	CS	GA

### Speedway Accessories

System Type	Accessory Type	Width	Finish & Material
eg. SW4	DIV	300	GA

### Speedway Straight Ladder Covers

System Type	Cover Type	Ladder Type	Width	Finish & Material
eg. SW4	CC	SL3	300	GA

### Speedway Fitting Covers

System Type	Cover Type	Fitting Type	Width(s)	Radius	Finish & Material
eg. SW4	CC/FFC	FE30	300	450	GA

## Finish and Materials (●)

Details on the full range of standard Finishes and Materials are given in the Finish and Materials section (page 26) and General Technical Section (page 246).



HOT DIPPED  
GALVANIZED  
VANTRUNK  
EXTREME  
STEEL



HOT DIPPED  
GALVANIZED  
VANTRUNK  
MILD STEEL



HOT DIPPED  
GALVANIZED  
VANTRUNK SILICON  
RICH STRUCTURAL  
STEEL



DEEP  
GALVANIZED  
VANTRUNK  
SILICON RICH  
STRUCTURAL  
STEEL



MARINE GRADE  
STAINLESS  
STEEL



## System Type

SW4	Speedway SW4
SW5	Speedway SW5
SW6	Speedway SW
SW	Common to all Speedway systems
SW45	Common to SW4 & SW5

## Ladder Type

SL3	Straight ladder – 3m length
SL6	Straight ladder – 6m length

## Fitting Type

FE	Flat elbow
IR	Inside riser
OR	Outside riser
AR	Articulated riser (add number of sections e.g. AR3 = 3 sections)
ET	Equal tee
UT	Unequal tee (quote main width Wm & branch width Wb)
EC	Cross
RS	Straight Reducer (quote primary width Wp & secondary width Ws)
RL	Reducer left (quote primary width Wp & secondary width Ws)
RR	Reducer right (quote primary width Wp & secondary width Ws)

## Width (standard)

150mm, 300mm, 450mm, 600mm, 750mm, 900mm & 1050mm

## Radius (standard)

300mm, 450mm, 600mm, 750mm, 900mm, 1050mm & 1200mm

## Coupler Type

CS	Straight coupler
HAC	Horizontal adjustable coupler (SW4 & SW5 are common – use SW45)
VAC	Vertical adjustable coupler (SW4 & SW5 are common – use SW45)

Code Sample: Choose system type and finish

## Page

35

36

37

Common to all Speedway systems

Common to SW4 & SW5

35

36

37

Common to all Speedway systems

Common to SW4 & SW5

35

36

37

Common to all Speedway systems

Common to SW4 & SW5

35

36

37

Common to all Speedway systems

Common to SW4 & SW5

35

36

37

Common to all Speedway systems

Common to SW4 & SW5

35

36

37

Common to all Speedway systems

Common to SW4 & SW5

35

36

37

Common to all Speedway systems

Common to SW4 & SW5

35

36

37

Common to all Speedway systems

Common to SW4 & SW5

35

36

37

Common to all Speedway systems

Common to SW4 & SW5

35

36

37

Common to all Speedway systems

Common to SW4 & SW5

35

36

37

Common to all Speedway systems

Common to SW4 & SW5

35

36

37

Common to all Speedway systems

Common to SW4 & SW5

35

36

37

Common to all Speedway systems

Common to SW4 & SW5

35

36

37

Common to all Speedway systems

Common to SW4 & SW5

35

36

37

Common to all Speedway systems

Common to SW4 & SW5

35

36

37

Common to all Speedway systems

Common to SW4 & SW5

35

36

37

Common to all Speedway systems

Common to SW4 & SW5

35

36

37

Common to all Speedway systems

Common to SW4 & SW5

35

36

37

Common to all Speedway systems

Common to SW4 & SW5

35

36

37

Common to all Speedway systems

Common to SW4 & SW5

35

36

37

Common to all Speedway systems

Common to SW4 & SW5

35

36

37

Common to all Speedway systems

Common to SW4 & SW5

35

36

37

Common to all Speedway systems

Common to SW4 & SW5

35

36

37

Common to all Speedway systems

Common to SW4 & SW5

35

36

37

Common to all Speedway systems

Common to SW4 & SW5

35

36

37

Common to all Speedway systems

Common to SW4 & SW5

35

36

37

Common to all Speedway systems

Common to SW4 & SW5

35

36

37

Common to all Speedway systems

Common to SW4 & SW5

35

36

37

Common to all Speedway systems

Common to SW4 & SW5

35

36

37

Common to all Speedway systems

Common to SW4 & SW5

35

36

37

Common to all Speedway systems

Common to SW4 & SW5

35

36

37

Common to all Speedway systems

Common to SW4 & SW5

35

36

37

Common to all Speedway systems

Common to SW4 & SW5

35

36

37

Common to all Speedway systems

Common to SW4 & SW5

35

36

37

Common to all Speedway systems

Common to SW4 & SW5

35

36

37

Common to all Speedway systems

Common to SW4 & SW5

35

36

37

Common to all Speedway systems

Common to SW4 & SW5

35

36

37

Common to all Speedway systems

Common to SW4 & SW5

35

36

37

Common to all Speedway systems

Common to SW4 & SW5

35

36

37

Common to all Speedway systems

Common to SW4 & SW5

35

36

37

Common to all Speedway systems

Common to SW4 & SW5

35

36

37

Common to all Speedway systems

Common to SW4 & SW5

35

36

37

Common to all Speedway systems

Common to SW4 & SW5

35

36

37

Common to all Speedway systems

Common to SW4 & SW5

35

36

37

Common to all Speedway systems

Common to SW4 & SW5

35

36

37

Common to all Speedway systems

Common to SW4 & SW5

35

36

37

Common to all Speedway systems

Common to SW4 & SW5

35

36

37

Common to all Speedway systems

Common to SW4 & SW5

35

36

37

Common to all Speedway systems

Common to SW4 & SW5

35

36

37

Common to all Speedway systems

Common to SW4 & SW5

35

36

37

Common to all Speedway systems

Common to SW4 & SW5

35

36

37

Common to all Speedway systems

Common to SW4 & SW5





## ***CABLE LADDER***

**Speedway Straight Cable Ladder is available in standard widths of 150mm, 300mm, 450mm, 600mm, 750mm, 900mm & 1050mm. Other widths from 100mm to 1500mm in 50mm increments are available to order.**

Ladders over 1050mm wide are available in Heavy and Extra Heavy Duty systems only. Speedway Straight Cable Ladder is available in lengths of 3m and 6m. Unless otherwise specified, 3m lengths are supplied as standard. 6m lengths are made to order.

Speedway cable ladder systems are manufactured in either 1.5mm or 2.0mm material gauges as standard, after taking into consideration the environmental conditions into which the system is being installed.

Details of all available side walls and rung gauge configurations are given in the Speedway Technical Section, consult our Sales Team for details.

The standard side wall and rung gauge combination will be supplied unless otherwise stated.

Rung spacing on straight ladders is at 300mm centres. As standard, the Speedway rung is orientated alternately inverted to allow for cable cleat spacing at 600mm centres.

Other orientations such as rungs all facing up or all facing down are available to order.

ACCREDITED TO THE  
FOLLOWING STANDARD



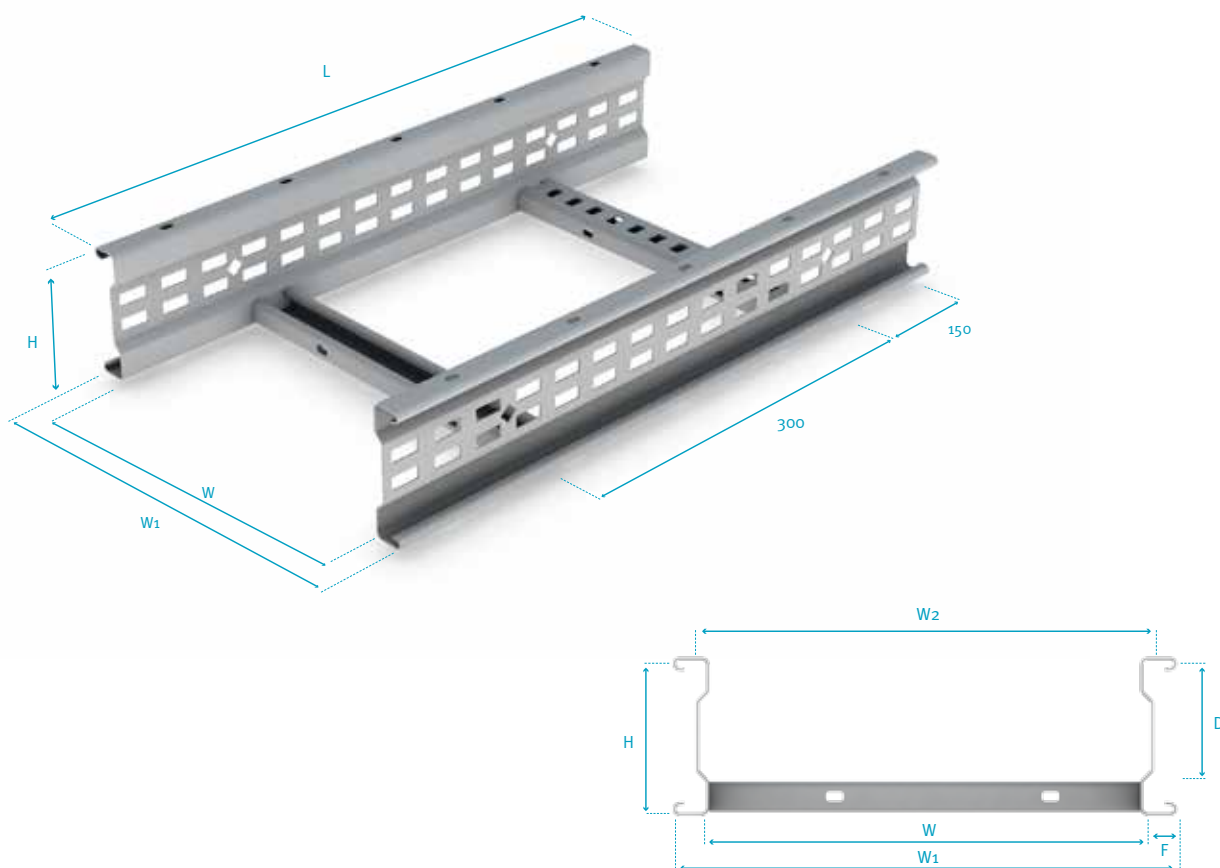
**SW4 / SL3\* / 150 / GY**  
System Type      Ladder Type      Width      Finish

\*Straight Cable ladder is available in: SL3 (3000mm), SL6 (6000mm)  
(For non-standard lengths please contact our Sales Team)

## Speedway SW4 Cable Ladder

Speedway 4 (SW4) Medium Duty Cable Ladder is manufactured in 3.0m lengths as standard with 6.0m lengths to order. The cable ladder is available in standard widths of 150mm, 300mm, 450mm, 600mm, 750mm and 900mm, although other widths up to 1050mm are available to order. Rung spacing is 300mm as standard.

Ref.SW4



Part Number	No. of Rungs	Dimensions (mm)				Weight (kg)
		W	W1	L	H	
SW4/SL3/150/○	10	150	190	3000	104	11.93
SW4/SL3/300/○	10	300	340			13.55
SW4/SL3/450/○	10	450	490			15.17
SW4/SL3/600/○	10	600	640			16.79
SW4/SL3/750/○	10	750	790			21.12
SW4/SL3/900/○	10	900	940			23.28
SW4/SL3/1050/○	10	1050	1090			25.44

○ = Select a Finish & Material

Weights shown are for standard hot dip galvanised finish only, for Stainless Steel and Silicon Rich Steel weight conversion factors please refer to the Speedway Technical Section of our catalogue (Page 96).

Height	H	104mm
Loading Depth	D	78mm
Ladder Width	W	100mm to 1050mm
Maximum Internal Width	W2	W + 10mm
Overall Width	W1	W + 40mm
Flange Width	F	20mm

Finishes & Materials:



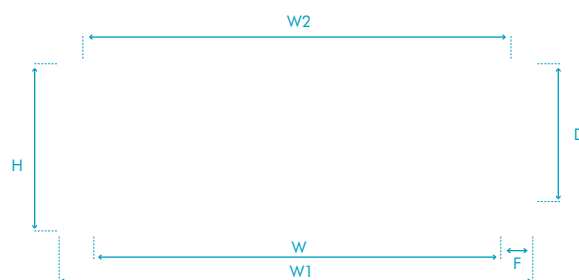
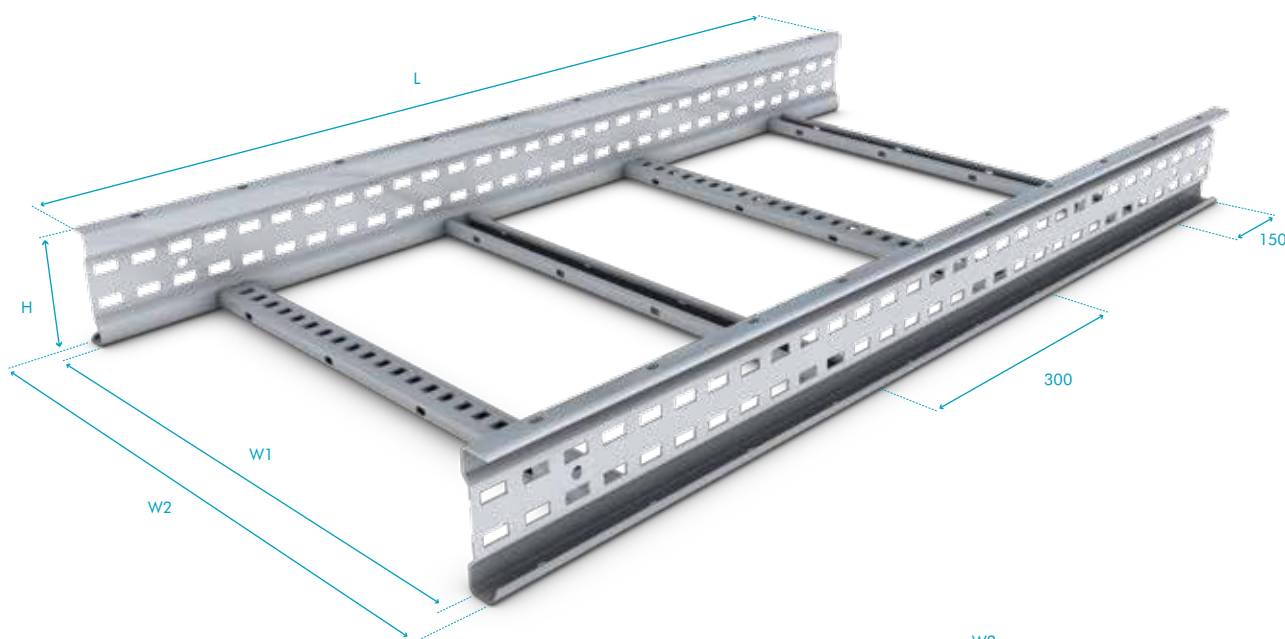
Supplied with:



## Speedway SW5 Cable Ladder

Speedway 5 (SW5) Heavy Duty Cable Ladder is manufactured in 3.0m lengths as standard with 6.0m lengths supplied to order. The cable ladder is available in standard widths of 150mm, 300mm, 450mm, 600mm, 750mm, 900mm and 1050mm, although other widths up to 1500mm are available to order. Rung spacing is 300mm as standard.

**Ref.SW5**



Part Number	No. of Rungs	Dimensions (mm)				Weight (kg)
		W	W1	L	H	
SW5/SL3/150/○	10	150	200	3000	125	18.53
SW5/SL3/300/○	10	300	350			20.15
SW5/SL3/450/○	10	450	500			21.77
SW5/SL3/600/○	10	600	650			23.40
SW5/SL3/750/○	10	750	800			27.72
SW5/SL3/900/○	10	900	950			29.88
SW5/SL3/1050/○	10	1050	1100			32.05

Height	H	125mm
Loading Depth	D	100mm
Ladder Width	W	100mm to 1500mm
Maximum Internal Width	W1	W + 14mm
Overall Width	W2	W + 50mm
Flange Width	F	25mm

Finishes & Materials:



Supplied with:



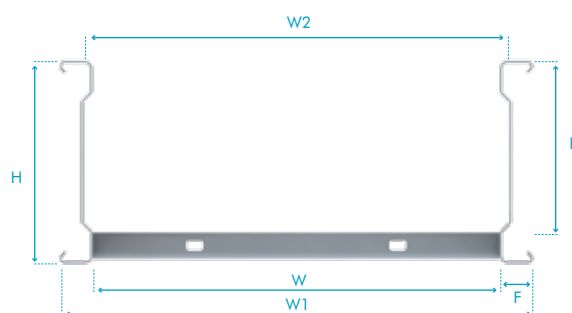
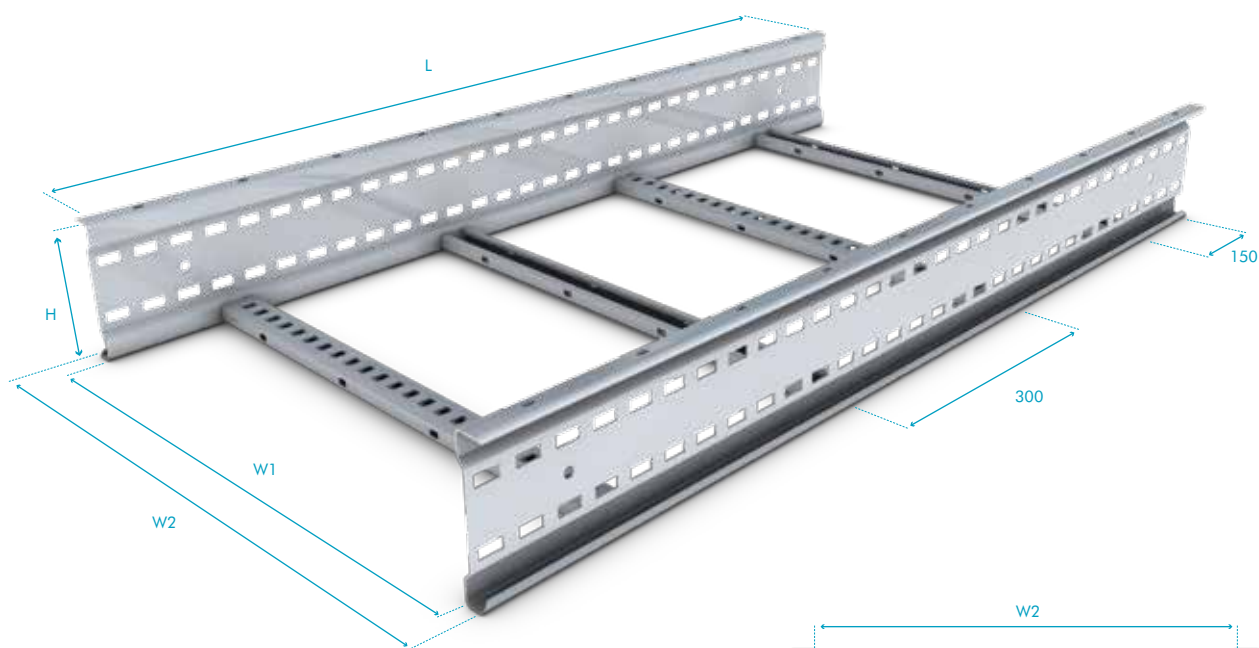
○ = Select a Finish & Material

Weights shown are for standard hot dip galvanised finish only, for Stainless Steel and Silicon Rich Steel weight conversion factors please refer to the Speedway Technical Section of our catalogue (Page 96).

## Speedway SW6 Cable Ladder

Speedway 6 (SW6) Extra Heavy Duty Cable Ladder is manufactured in 3.0m lengths as standard with 6.0m lengths supplied to order. The cable ladder is available in standard widths of 150mm, 300mm, 450mm, 600mm, 750mm, 900mm and 1050mm, although other widths up to 1500mm are available to order. Rung spacing is 300mm as standard.

Ref.SW6



Part Number	No. of Rungs	Dimensions (mm)				Weight (kg)
		W	W1	L	H	
SW6/SL3/150/O	10	150	200	3000	150	21.63
SW6/SL3/300/O	10	300	350			23.79
SW6/SL3/450/O	10	450	500			25.95
SW6/SL3/600/O	10	600	650			28.11
SW6/SL3/750/O	10	750	800			30.28
SW6/SL3/900/O	10	900	950			32.44
SW6/SL3/1050/O	10	1050	1100			34.60

Height	H	150mm
Loading Depth	D	125mm
Ladder Width	W	100mm to 1500mm
Maximum Internal Width	W1	W + 14mm
Overall Width	W2	W + 50mm
Flange Width	F	25mm

Finishes & Materials:



Supplied with:



O = Select a Finish & Material

Weights shown are for standard hot dip galvanised finish only, for Stainless Steel and Silicon Rich Steel weight conversion factors please refer to the Speedway Technical Section of our catalogue (Page 96).