



## ***COUPLERS***

**A full range of couplers are available for the Vantrunk Cable Tray system, providing a secure and versatile means of connecting straight cable tray lengths.**

Vantrunk supply two alternative methods of coupling straight lengths of tray together that both ensure a safe straight joint. Unless otherwise stated, the Flat Bar Coupler will be supplied as standard.

Vantrunk also supply a range of additional couplers including horizontal & vertical adjustable couplers which allow offsets to be made in cable tray runs to suit specific site installation requirements.

Information shown is for Heavy Duty Return Flange couplers, data for other sidewall heights is available on request.

ACCREDITED TO THE  
FOLLOWING STANDARD

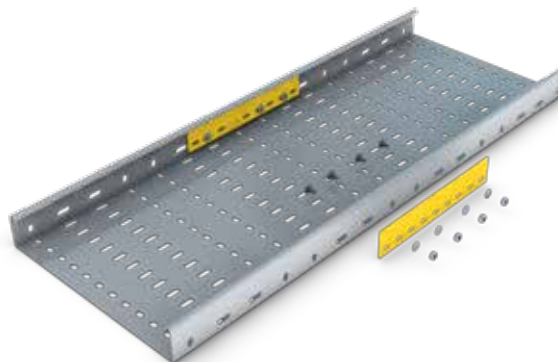


## Heavy Duty Flat Bar Coupler

Ref. HR/FBC

The Vantrunk Heavy Duty Return Flange cable tray flat bar coupler is the standard means of connecting straight lengths of cable tray and is available in the full range of side wall heights to match that of the cable tray range. Unless otherwise specified, the flat bar coupler will be supplied as standard.

Flat Bar Couplers are supplied individually and with fixings.



Part Number

HR/FBC/O

Finishes & Materials:



Supplied with:



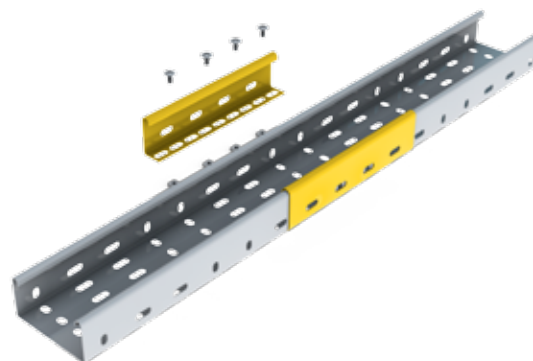
○ = Select a Finish & Material

## Heavy Duty Straight Coupler

Ref. HR/SC

The Vantrunk heavy duty return flange cable tray straight coupler provides an effective means of connection between heavy duty return flange straight cable tray lengths.

Straight Couplers are supplied as pairs and with fixings.



Part Number

HR/FBC/O

Finishes & Materials:



Supplied with:



○ = Select a Finish & Material

## Heavy Duty Horizontal Adjustable Coupler

**Ref. HR/HAC**

The Vantrunk Heavy Duty Return Flange cable tray horizontal adjustable coupler allows horizontal adjustment between adjacent lengths of cable tray and is available in the full range of side wall heights to match that of the Heavy Duty cable tray.

Horizontal Adjustable Couplers are supplied individually and with fixings.



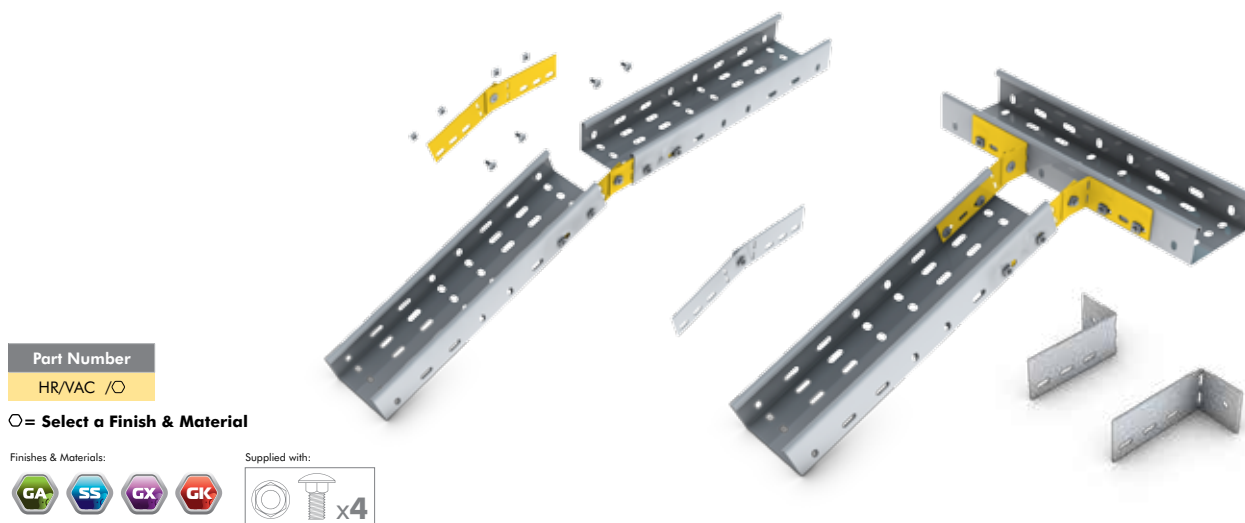
## Heavy Duty Vertical Adjustable Coupler

**Ref. HR/VAC**

The Vantrunk Heavy Duty Return Flange cable tray vertical adjustable coupler is the standard means of allowing vertical adjustment between adjacent lengths of cable tray and is available in the full range of side wall heights to match that of the Heavy Duty cable tray.

The vertical adjustable coupler features easi-bend slots which allow the couplers to be adjusted on site to create combined horizontal & vertical offset connections, tray connections onto the side of a cable tray run to form tee connections, or connections directly to a wall or floor.

Vertical Adjustable Couplers are supplied individually and with fixings.

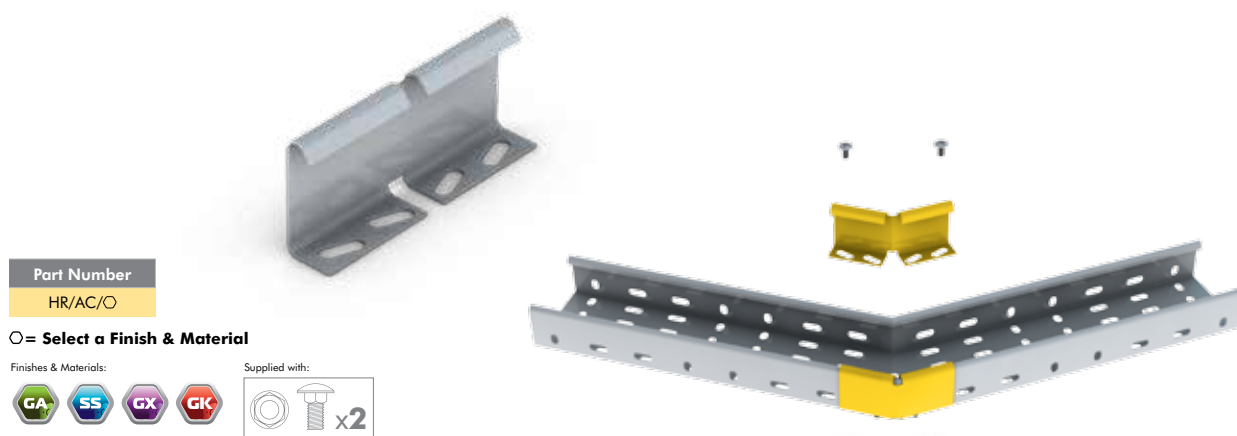


## Heavy Duty Adjustable Coupler

Ref. HR/AC

The Vantrunk Heavy Duty Return Flange cable tray adjustable coupler allows horizontal adjustment between adjacent lengths of cable tray.

Adjustable Couplers are supplied as pairs and with fixings.



Part Number

HR/AC/O

O= Select a Finish & Material

Finishes & Materials:



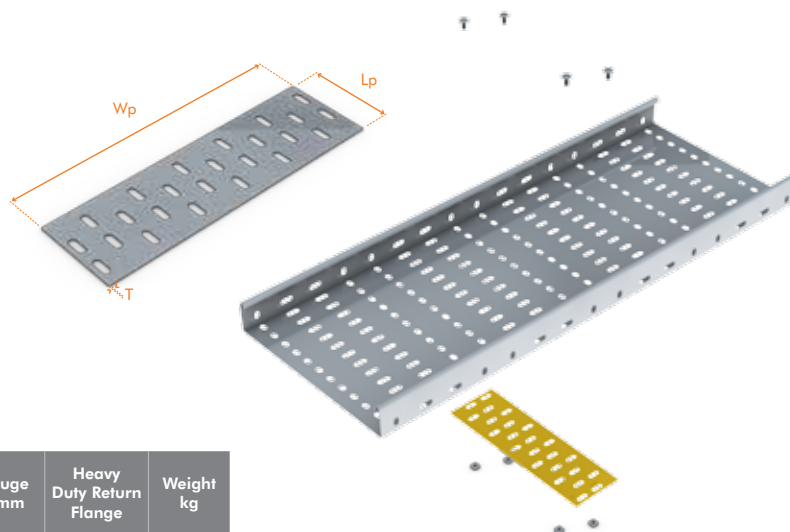
Supplied with:



## Fish Plate Coupler

Ref. TR/FPC

The Vantrunk fish plate coupler gives support across the base of the cable tray and is available to suit cable tray of widths 50mm to 900mm. Fish plate couplers are recommended for connecting straight cable trays which are heavily loaded.



Part Number	Tray Width mm	Wp mm	Lp mm	Gauge T mm	Heavy Duty Return Flange	Weight kg
TR/FPC/50/O	50	42	88	1.5	4	0.04
TR/FPC/75/O	75	67			4	0.07
TR/FPC/100/O	100	92			4	0.09
TR/FPC/150/O	150	142			4	0.14
TR/FPC/200/O	200	192			6	0.18
TR/FPC/225/O	225	217			6	0.21
TR/FPC/300/O	300	292			6	0.28

Finishes & Materials:



Supplied with:



O= Select a Finish & Material

Weights shown are for standard hot dip galvanised finish only, for Stainless Steel & Corten A weight please refer to the technical section of our catalogue.