



FITTINGS

The Vantrunk cable tray system comprises of a full range of perforated cable tray fittings that provide changes in direction, changes in width and to create intersections between straight runs. Vantrunk cable tray fittings feature an integral coupler.

The range of cable tray fittings includes flat elbows, risers, equal & unequal tees, crosses and reducers. Cable Tray fittings are available in all corresponding widths and Medium Duty and all Heavy Duty sections.

CABLE TRAY FLAT ELBOWS

Flat Elbows are used to create fixed angular changes in direction in the same plane, between horizontal cable tray runs when the cable tray is installed in the horizontal plane and between vertical cable tray runs when the cable tray is installed in the vertical plane.

Vantrunk cable tray flat elbows are available in widths of 50mm to 900mm. The width is measured externally between the side walls to facilitate the use of the integral coupler.

The Vantrunk Medium Duty Return Flange flat elbow has a sidewall height of 25mm. The standard Vantrunk Heavy Duty Return Flange flat elbow has a sidewall height of 50mm. Other heavy duty sidewall heights from 30mm to 150mm are available to order.

Vantrunk cable tray flat elbows are available in fixed angles of 30°, 45°, 60° and 90° as standard.

Vantrunk return flange cable tray flat elbows have a nominal internal radius of 75mm for widths up to and including 150mm and a nominal internal radius of 150mm for widths of 200mm and above. Other radii are available to order.

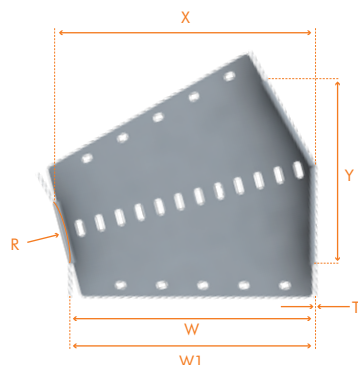
Information shown is for Heavy Duty Return Flange flat elbows, data for other sidewall heights available on request.

ACCREDITED TO THE
FOLLOWING STANDARD



Heavy Duty Return Flange 30° Flat Elbow

Ref. HR/FE30



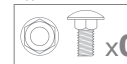
Part Number	Fitting Width mm	W mm	W1 mm	T mm	R mm	X mm	Y mm	Weight (kg)
HR/FE30/50/○	50	48.2	50	0.9	75	60	53	0.12
HR/FE30/75/○	75	73.2	75			85	75	0.16
HR/FE30/100/○	100	98.2	100			110	88	0.20
HR/FE30/150/○	150	148.2	150			160	112	0.28
HR/FE30/200/○	200	197.6	200	1.2	150	220	175	0.63
HR/FE30/225/○	225	222.6	225			245	188	0.69
HR/FE30/300/○	300	297.6	300			320	225	0.94

○= Select a Finish & Material

Finishes & Materials:



Supplied with:



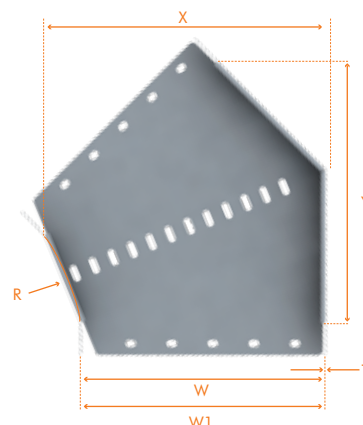
Not Required:



Gauge & weights are given for the hot dip galvanized mild steel cable tray, with a standard side wall height of 50mm. Refer to 'Cable Tray Technical Data' for other materials and gauges.

Heavy Duty 45° Flat Elbow

Ref. HR/FE45



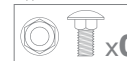
Part Number	Fitting Width mm	W mm	W1 mm	T mm	R mm	X mm	Y mm	Weight kg
HR/FE45/50/○	50	48.2	50	0.9	75	72	89	0.16
HR/FE45/75/○	75	73.2	75			97	106	0.20
HR/FE45/100/○	100	98.2	100			122	124	0.25
HR/FE45/150/○	150	148.2	150			172	159	0.35
HR/FE45/200/○	200	197.6	200	1.2	150	224	248	0.87
HR/FE45/225/○	225	222.6	225			269	265	0.93
HR/FE45/300/○	300	297.6	300			344	318	1.26

○= Select a Finish & Material

Finishes & Materials:



Supplied with:



Not Required:



Gauge & weights are given for the hot dip galvanized mild steel cable tray, with a standard side wall height of 50mm. Refer to 'Cable Tray Technical Data' for other materials and gauges.

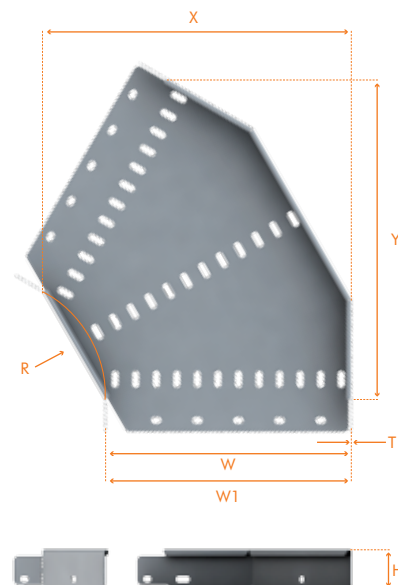
Heavy Duty 60° Flat Elbow

Ref. HR/FE60



Part Number	Fitting Width mm	W mm	W1 mm	T mm	R mm	X mm	Y mm	Weight kg
HR/FE60/50/○	50	48.2	50	0.9	75	60	63	0.12
HR/FE60/75/○	75	73.2	75			85	75	0.16
HR/FE60/100/○	100	98.2	100			110	88	0.20
HR/FE60/150/○	150	148.2	150			160	113	0.28
HR/FE60/200/○	200	197.6	200	1.2	150	275	303	1.05
HR/FE60/225/○	225	222.6	225			245	188	0.69
HR/FE60/300/○	300	297.6	300			320	225	0.94

○ = Select a Finish & Material



Gauge & weights are given for the hot dip galvanized mild steel cable tray, with a standard side wall height of 50mm. Refer to 'Cable Tray Technical Data' for other materials and gauges.

Finishes & Materials:



Supplied with:



Not Required:



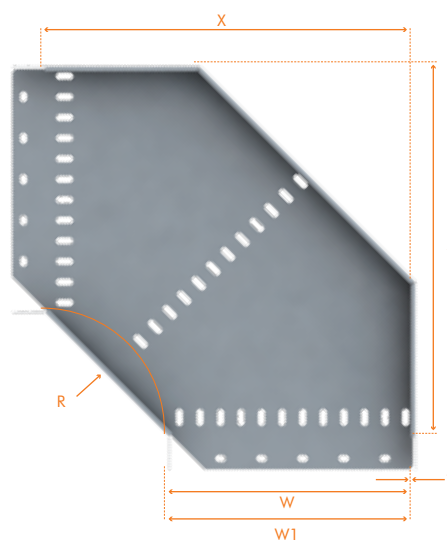
Heavy Duty 90° Flat Elbow

Ref. HR/FE90



Part Number	Fitting Width mm	W mm	W1 mm	T mm	R mm	X mm	Y mm	Weight kg
HR/FE90/50/○	50	48.2	50	0.9	75	125	125	0.26
HR/FE90/75/○	75	73.2	75			150	150	0.35
HR/FE90/100/○	100	98.2	100			175	175	0.44
HR/FE90/150/○	150	148.2	150			225	225	0.62
HR/FE90/200/○	200	197.6	200	1.2	150	350	350	1.57
HR/FE90/225/○	225	222.6	225			375	375	1.75
HR/FE90/300/○	300	297.6	300			450	450	2.39

○ = Select a Finish & Material

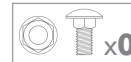


Gauge & weights are given for the hot dip galvanized mild steel cable tray. With a standard side wall height of 50mm. Refer to 'Cable Tray Technical Data' for other materials and gauges.

Finishes & Materials:



Supplied with:



Not Required:



GET THE PERFECT FIT WITH THE CABLE TRAY INTEGRAL COUPLER



**FAST FITTING
COUPLER**

CABLE TRAY FEATURES:

Vantrunk cable tray fittings in medium and heavy duty range include integrated couplings, that give the following benefits:

- Eliminate the need for any additional couplers when joining a fitting to a straight length.
- Reduces the number of fixings required and saves installation time and money.
- Each fitting gives full support, not only to the fitting sides but also along the base due to the integral fish plate style coupler.
- An integral Fish plate coupling on the fitting to the cable tray base overlaps and provides a smooth connection to help eliminate any cable damage.
- Improves earth continuity

For more information on the
Cable Tray Integral Coupler
visit vantrunk.com



VANTRUNK
CABLE-TRAY

119

visit online at vantrunk.com

Lengths

Cable Ladder

Fittings

Cable Tray

Couplers

Steel Framing

Accessories

Covers

Supports

Technical

Mounting Frame

Fixings

Bespoke

Technical

Index



CABLE TRAY RISERS

Risers are used to create angular changes in direction between cable tray runs in different planes and can be used in both the horizontal and vertical orientations.

Vantrunk cable tray risers are available in widths of 50mm to 900mm. The width is measured externally between the side walls to facilitate the use of the integral coupler.

The Vantrunk Medium Duty Return Flange riser has a sidewall height of 25mm. The standard Vantrunk Heavy Duty Return Flange riser has a side wall height of 50mm. Other heavy duty sidewall heights from 30mm to 150mm are available to order.

For widths up to and including 600mm, the Vantrunk cable tray risers are supplied as variable risers for forming to either an inside (internal) riser, outside (external) riser or offset riser as required. The variable riser can be formed from 0° to over 90° as both an inside (internal) or outside (external) riser. The variable riser can also be used to create offsets to suit particular site installation requirements.

For widths above 600mm, the Vantrunk cable tray riser is supplied as a pre-formed inside or outside riser with fixed angles of 30°, 45°, 60° and 90° as standard.

When formed to 90°, Vantrunk Medium Duty Return Flange cable tray risers have a nominal radius of 150mm for widths up to and including 300mm, and a nominal radius of 300mm for widths of 450mm and above. When formed to 90°, Vantrunk Heavy Duty Return Flange cable tray risers have a nominal radius of 300mm for all widths. Other radii are available to order.

Information shown is for Heavy Duty Return Flange risers, data for other sidewall heights available on request.



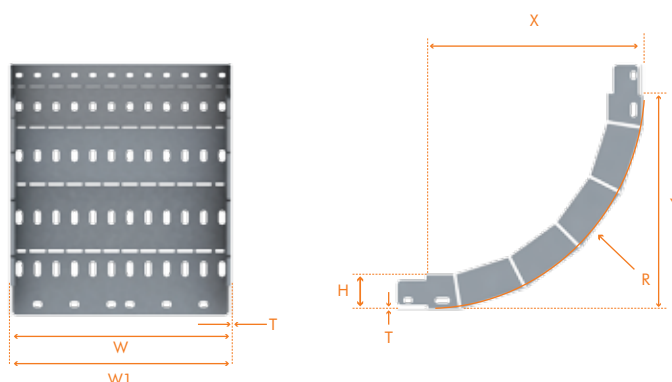
Vantrunk Heavy Duty Return Flange Cable Tray Variable Riser used to create an inside, outside or offset risers. (Widths 50mm to 600mm)

ACCREDITED TO THE
FOLLOWING STANDARD



Heavy Duty Variable Riser

Ref. HR/VR



Part Number	Fitting Width mm	W mm	W1 mm	T mm	R mm	X mm	Y mm	Weight (kg)
Variable Risers as 30° Inside Risers								
HR/VR/50/○	50	48.2	50	0.9	300	401	212	0.60
HR/VR/75/○	75	73.2	75			401	212	0.69
HR/VR/100/○	100	98.2	100			401	212	0.77
HR/VR/150/○	150	148.2	150			401	212	0.96
HR/VR/200/○	200	197.6	200			401	212	1.53
HR/VR/225/○	225	222.6	225	1.2		401	212	1.67
HR/VR/300/○	300	297.6	300			401	212	2.04
Variable Risers as 45° Inside Risers								
HR/VR/50/○	50	48.2	50	0.9	300	380	238	0.60
HR/VR/75/○	75	73.2	75			380	238	0.69
HR/VR/100/○	100	98.2	100			380	238	0.77
HR/VR/150/○	150	148.2	150			380	238	0.96
HR/VR/200/○	200	197.6	200			380	238	1.53
HR/VR/225/○	225	222.6	225	1.2		380	238	1.67
HR/VR/300/○	300	297.6	300			380	238	2.04
Variable Risers as 60° Inside Risers								
HR/VR/50/○	50	48.2	50	0.9	300	356	362	0.596
HR/VR/75/○	75	73.2	75			356	362	0.69
HR/VR/100/○	100	98.2	100			356	362	0.77
HR/VR/150/○	150	148.2	150			356	362	0.96
HR/VR/200/○	200	197.6	200			356	362	1.53
HR/VR/225/○	225	222.6	225	1.2		356	362	1.67
HR/VR/300/○	300	297.6	300			356	362	2.04
Variable Risers as 90° Inside Risers								
HR/VR/50/○	50	48.2	50	0.9	300	301	301	0.60
HR/VR/75/○	75	73.2	75			301	301	0.69
HR/VR/100/○	100	98.2	100			301	301	0.77
HR/VR/150/○	150	148.2	150			301	301	0.96
HR/VR/200/○	200	197.6	200			301	301	1.53
HR/VR/225/○	225	222.6	225	1.2		301	301	1.67
HR/VR/300/○	300	297.6	300			301	301	2.04

Part Number	Fitting Width mm	W mm	W1 mm	T mm	R mm	X mm	Y mm	Weight (kg)
Variable Risers as 30° Outside Risers								
HR/VR/50/○	50	48.2	50	0.9	300	448	170	0.60
HR/VR/75/○	75	73.2	75			448	170	0.69
HR/VR/100/○	100	98.2	100			448	170	0.77
HR/VR/150/○	150	148.2	150			448	170	0.96
HR/VR/200/○	200	197.6	200	1.2		448	170	1.53
HR/VR/225/○	225	222.6	225			448	170	1.67
HR/VR/300/○	300	297.6	300			448	170	2.04
Variable Risers as 45° Outside Risers								
HR/VR/50/○	50	48.2	50	0.9	300	461	225	0.60
HR/VR/75/○	75	73.2	75			461	225	0.69
HR/VR/100/○	100	98.2	100			461	225	0.77
HR/VR/150/○	150	148.2	150			461	225	0.96
HR/VR/200/○	200	197.6	200	1.2		461	225	1.53
HR/VR/225/○	225	222.6	225			461	225	1.67
HR/VR/300/○	300	297.6	300			461	225	2.04
Variable Risers as 60° Outside Risers								
HR/VR/50/○	50	48.2	50	0.9	300	433	275	0.60
HR/VR/75/○	75	73.2	75			433	275	0.69
HR/VR/100/○	100	98.2	100			433	275	0.77
HR/VR/150/○	150	148.2	150			433	275	0.96
HR/VR/200/○	200	197.6	200	1.2		433	275	1.53
HR/VR/225/○	225	222.6	225			433	275	1.67
HR/VR/300/○	300	297.6	300			433	275	2.04
Variable Risers as 90° Outside Risers								
HR/VR/50/○	50	48.2	50	0.9	300	348	348	0.60
HR/VR/75/○	75	73.2	75			348	348	0.69
HR/VR/100/○	100	98.2	100			348	348	0.77
HR/VR/150/○	150	148.2	150			348	348	0.96
HR/VR/200/○	200	197.6	200	1.2		348	348	1.53
HR/VR/225/○	225	222.6	225			348	348	1.67
HR/VR/300/○	300	297.6	300			348	348	2.04

Finishes & Materials:



Supplied with:



Not Required:



O = Select a Finish & Material

Gauge & weights are given for the hot dip galvanized mild steel cable tray, with a standard side wall height of 50mm. Refer to 'Cable Tray Technical Data' for other materials and gauges.



CABLE TRAY TEES

Tees are used to create right angle connections in the same plane, between horizontal cable tray runs when the cable tray is installed in the horizontal plane and between vertical cable tray runs when the cable tray is installed in the vertical plane.

Vantrunk cable tray tees are available in combinations of widths of 50mm to 900mm. Tees with the same main & branch width are called equal tees. Tees which have a different main width to the branch width are called unequal tees. The width is measured externally between the side walls to facilitate the use of the integral coupler.

The Vantrunk Medium Duty Return Flange tee has a sidewall height of 25mm. The standard Vantrunk Heavy Duty Return Flange tee has a side wall height of 50mm. Other heavy duty side wall heights from 30mm to 150mm are available to order.

Unequal/unequal tees, where all three exits are different, are available to order. Consult our Sales Team for further details.

Vantrunk cable tray equal tees and unequal tees have a nominal internal radius of 75mm for widths up to and including 150mm, and a nominal internal radius of 150mm for widths of 200mm and above. Other radii are available to order.

Information shown is for Heavy Duty Return Flange tees, data for other sidewall heights available on request.

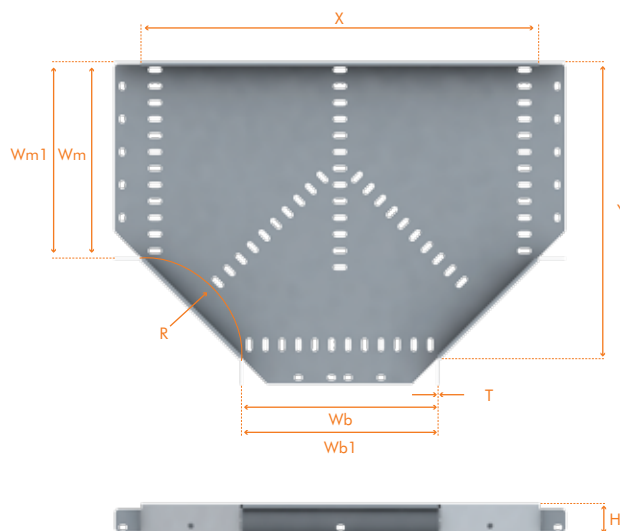
ACCREDITED TO THE
FOLLOWING STANDARD



Heavy Duty Equal Tees

Ref. HR/ET

Vantrunk Heavy Duty Return Flange cable tray equal tees have a main width W_m and a branch width W_b which are identical.



Part Number	Tray Fitting		W_m mm	W_{m1} mm	W_b mm	W_{b1} mm	T mm	R mm	X mm	Y mm	Weight (kg)
	Main width mm	Branch Width mm									
HR/ET/50/○	50		48.2	50	48.2	50	0.9	75	204	127	0.40
HR/ET/75/○	75		73.2	75	73.2	75			229	152	0.52
HR/ET/100/○	100		98.2	100	98.2	100			254	177	0.63
HR/ET/150/○	150		148.2	150	148.2	150			304	227	0.87
HR/ET/200/○	200		197.6	200	197.6	200	1.2	150	504	352	2.39
HR/ET/225/○	225		222.6	225	222.6	225			530	377	2.61
HR/ET/300/○	300		297.6	300	297.6	300			605	452	3.30

○ = Select a Finish & Material

Finishes & Materials:



Supplied with:



Not Required:



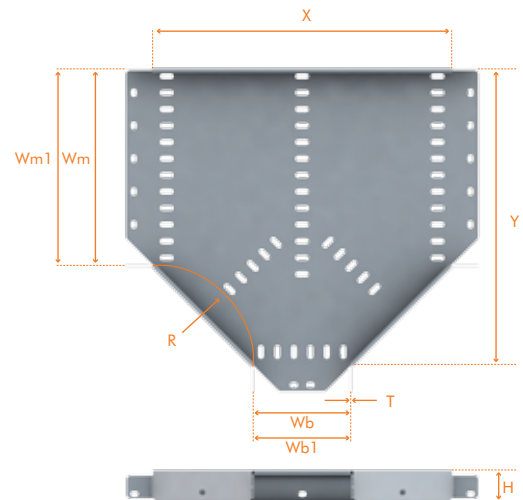
Gauge & weights are given for the hot dip galvanized mild steel cable tray, with a standard side wall height of 50mm. Refer to 'Cable Tray Technical Data' for other materials and gauges.

Heavy Duty Unequal Tees

Ref. HR/UT

Vantrunk Heavy Duty Return Flange cable tray equal tees have a main width Wm and a branch width Wb which are different.

Part Number	Tray Fitting		Wm mm	Wm1 mm	Wb mm	Wb1 mm	T mm	R mm	X mm	Y mm	Weight (kg)
	Main width mm	Branch Width mm									
HR/UT/50/75/○	50	75	48.2	50	73.2	75			229	127	0.47
HR/UT/50/100/○	50	100	48.2	50	98.2	100	0.9	75	254	127	0.51
HR/UT/50/150/○	50	150	48.2	50	148.2	150			304	127	0.59
HR/UT/50/200/○	50	200	47.6	50	197.6	200			504	202	1.51
HR/UT/50/225/○	50	225	47.6	50	222.6	225	1.2	150	530	202	1.59
HR/UT/50/300/○	50	300	47.6	50	297.6	300			605	202	1.82
HR/UT/75/50/○	75	50	73.2	75	48.2	50			204	152	0.48
HR/UT/75/100/○	75	100	73.2	75	98.2	100	0.9	75	254	152	0.57
HR/UT/75/150/○	75	150	73.2	75	148.2	150			304	152	0.66
HR/UT/75/200/○	75	200	72.6	75	197.6	200			504	227	1.65
HR/UT/75/225/○	75	225	72.6	75	222.6	225	1.2	150	530	227	1.74
HR/UT/75/300/○	75	300	72.6	75	297.6	300			355	227	1.98
HR/UT/100/50/○	100	50	98.2	100	48.2	50			229	177	0.53
HR/UT/100/75/○	100	75	98.2	100	73.2	75	0.9	75	254	177	0.58
HR/UT/100/150/○	100	150	98.2	100	148.2	150			304	177	0.73
HR/UT/100/200/○	100	200	97.6	100	197.6	200			504	252	1.80
HR/UT/100/225/○	100	225	97.6	100	222.6	225	1.2	150	530	252	1.88
HR/UT/100/300/○	100	300	97.6	100	297.6	300			605	252	2.14
HR/UT/150/50/○	150	50	148.2	150	48.2	50			204	227	0.63
HR/UT/150/75/○	150	75	148.2	150	73.2	75	0.9	75	254	227	0.68
HR/UT/150/100/○	150	100	148.2	150	98.2	100			304	227	0.74
HR/UT/150/200/○	150	200	147.6	150	197.6	200			504	302	2.09
HR/UT/150/225/○	150	225	147.6	150	222.6	225	1.2	150	530	302	2.18
HR/UT/150/300/○	150	300	147.6	150	297.6	300			605	302	2.47
HR/UT/200/50/○	200	50	197.6	200	47.6	50			354	352	0.95
HR/UT/200/75/○	200	75	197.6	200	72.6	75			379	352	1.80
HR/UT/200/100/○	200	100	197.6	200	97.6	100			404	352	1.94
HR/UT/200/150/○	200	150	197.6	200	147.6	150	1.2	150	454	352	2.17
HR/UT/200/225/○	200	225	197.6	200	222.6	225			529	352	3.12
HR/UT/200/300/○	200	300	197.6	200	297.6	300			604	352	2.85
HR/UT/225/50/○	225	50	222.6	225	47.6	50			356	377	1.80
HR/UT/225/75/○	225	75	222.6	225	72.6	75			380	377	1.91
HR/UT/225/100/○	225	100	222.6	225	97.6	100			405	377	2.03
HR/UT/225/150/○	225	150	222.6	225	147.6	150	1.2	150	455	377	2.27
HR/UT/225/200/○	225	200	222.6	225	197.6	200			504	377	2.49
HR/UT/225/300/○	225	300	222.6	225	297.6	300			605	377	2.96
HR/UT/300/50/○	300	50	297.6	300	47.6	50			356	452	2.11
HR/UT/300/75/○	300	75	297.6	300	72.6	75			380	452	2.24
HR/UT/300/100/○	300	100	297.6	300	97.6	100			405	452	2.41
HR/UT/300/150/○	300	150	297.6	300	147.6	150	1.2	150	455	452	2.65
HR/UT/300/200/○	300	200	297.6	300	197.6	200			504	452	2.93
HR/UT/300/225/○	300	225	297.6	300	222.6	225			530	452	3.05



Finishes & Materials:



Supplied with:



Not Required:



○ = Select a Finish & Material

Gauge & weights are given for the hot dip galvanized mild steel cable tray, with a standard side wall height of 50mm. Refer to 'Cable Tray Technical Data' for other materials and gauges.

INTRODUCING THE DIGITAL TOOLBOX FROM VANTRUNK.COM

DIGITAL TOOLBOX FEATURES INCLUDE:

- ASK EDDY CURRENT
- EXCLUSIVE CONTENT
- NOTICEBOARD
- FAQ'S

AND MUCH, MUCH MORE



Scan QR code with your
smart phone app



VANTRUNK

125

visit online at vantrunk.com

Lengths

Cable Ladder

Fittings

Cable Tray

Couplers

Steel Framing

Accessories

Covers

Supports

Technical

Mounting Frame

Fixings

Bespoke

Technical

Index



CROSSES

Crosses are used to create right angle intersections in the same plane, between horizontal cable tray runs when the cable tray is installed in the horizontal plane and between vertical cable tray runs when the cable tray is installed in the vertical plane.

Vantrunk heavy Duty Return Flange cable tray crosses are available in widths of 50mm to 900mm. The width is measured externally between the side walls to facilitate the use of the integral coupler.

The Vantrunk Medium Duty Return Flange cross has a sidewall height of 25mm. The standard Vantrunk Heavy Duty Return Flange cross has a side wall height of 50mm. Other heavy duty side wall heights from 30mm to 150mm are available to order.

Vantrunk Medium Duty Return Flange crosses have a nominal internal radius of 75mm for widths up to and including 150mm and a nominal internal radius of 150mm for widths of 200mm and above. Other radii are available to order.

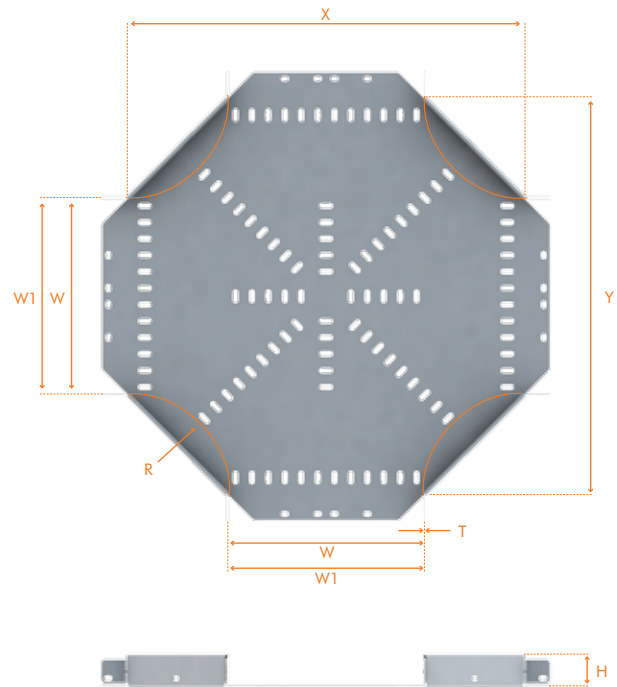
Information shown is for Heavy Duty Return Flange crosses, data for other sidewall heights available on request.

ACCREDITED TO THE
FOLLOWING STANDARD



Heavy Duty Crosses

Ref. HR/EC



Part Number	Fitting Width mm	W mm	W1 mm	T mm	R mm	X mm	Y mm	Weight (kg)
HR/EC/50/○	50	48.2	50	0.9	75	210	210	0.48
HR/EC/75/○	75	73.2	75			235	235	0.62
HR/EC/100/○	100	98.2	100			260	260	0.73
HR/EC/150/○	150	148.2	150			310	310	0.98
HR/EC/200/○	200	197.6	200	1.2	150	511	511	2.88
HR/EC/225/○	225	222.6	225			536	536	3.17
HR/EC/300/○	300	297.6	300			611	617	4.10

○ = Select a Finish & Material

Gauge & weights are given for the hot dip galvanized mild steel cable tray, with a standard side wall height of 50mm. Refer to 'Cable Tray Technical Data' for other materials and gauges.

Finishes & Materials:



Supplied with:



Not Required:





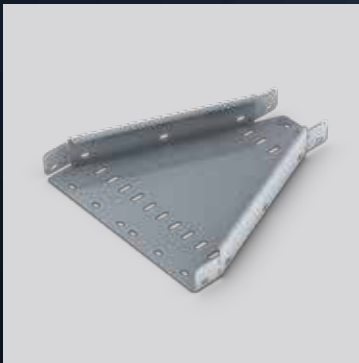
REDUCERS

Reducers are used to create a reduction in width along the cable tray run.

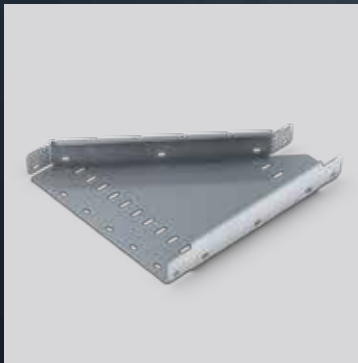
Straight reducers (RS) are used to create a concentric reduction, having an equal width reduction along both sides. Left hand reducers (RL) and right hand reducers (RR) are used to create offset reductions to suit particular site installation requirements.

Left hand reducers have the width reduction on the left when viewed from the primary width. Right hand reducers have the width reduction on the right when viewed from the primary width.

The Vantrunk Medium Duty Return Flange reducers have a sidewall height of 25mm. The standard Vantrunk Heavy Duty Return Flange reducers have a side wall height of 50mm. Other heavy duty side wall heights from 30mm to 150mm are available to order.



Vantrunk Heavy Duty Return Flange Cable Tray Straight Reducers



Vantrunk Heavy Duty Return Flange Cable Tray Left Hand Reducers



Vantrunk Heavy Duty Return Flange Cable Tray Right Hand Reducers

Vantrunk cable tray reducers are available in any combination widths from 900mm to 450mm and from 450mm to 50mm as standard. Other width combinations are available to order. The width is measured externally between the side walls to facilitate the use of the integral coupler.

Vantrunk cable tray reducers have a standard length of 250mm.

Information shown is for Heavy Duty Return Flange reducers, data for other sidewall heights available on request.

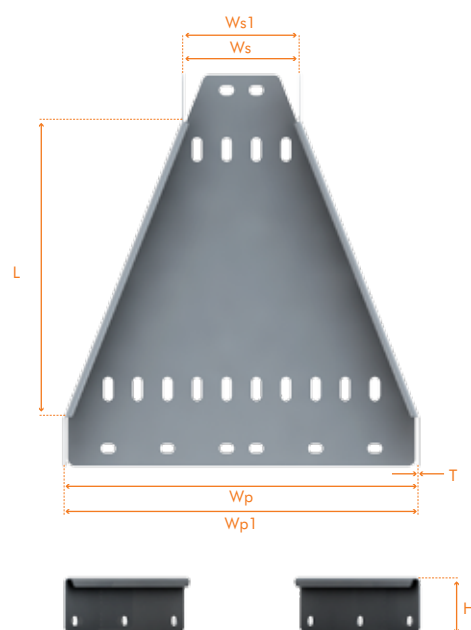
ACCREDITED TO THE
FOLLOWING STANDARD



Heavy Duty Straight Reducer

Ref. HR/RS

Straight reducers (RS) are used to create a concentric reduction, having an equal width reduction along both sides.



Part Number	Tray Fitting		Wp mm	Wp1 mm	Ws mm	Ws1 mm	T mm	L mm	Weight (kg)
	Primary width mm	Secondary Width mm							
HR/RS/75/50/○	75	50	73.2	75	48.2	50	0.9	250	0.40
HR/RS/100/50/○	100	50	98.2	100	48.2	50	0.9	250	0.43
HR/RS/100/50/○	100	75	98.2	100	73.2	75	0.9	250	0.49
HR/RS/150/50/○	150	50	148.2	150	48.2	50	0.9	250	0.50
HR/RS/150/75/○	150	75	148.2	150	73.2	75	0.9	250	0.56
HR/RS/150/100/○	150	100	148.2	150	98.2	100	0.9	250	0.58
HR/RS/200/50/○	200	50	197.6	200	47.6	50	1.2	250	0.55
HR/RS/200/75/○	200	75	197.6	200	72.6	75	1.2	250	0.61
HR/RS/200/100/○	200	100	197.6	200	97.6	100	1.2	250	0.64
HR/RS/200/150/○	200	150	197.6	200	147.6	150	1.2	250	0.70
HR/RS/225/50/○	225	50	223.2	225	48.2	48.2	0.9	250	0.59
HR/RS/225/75/○	225	75	223.2	225	73.2	73.2	0.9	250	0.65
HR/RS/225/100/○	225	100	223.2	225	98.2	98.2	0.9	250	0.68
HR/RS/225/150/○	225	150	223.2	225	148.2	148.2	0.9	250	0.73
HR/RS/225/200/○	225	200	222.6	225	197.6	200	1.2	250	0.78
HR/RS/300/50/○	300	50	298.2	300	48.2	50	0.9	250	0.70
HR/RS/300/75/○	300	75	298.2	300	73.2	75	0.9	250	0.75
HR/RS/300/100/○	300	100	298.2	300	98.2	100	0.9	250	0.78
HR/RS/300/150/○	300	150	298.2	300	148.2	150	0.9	250	0.84
HR/RS/300/200/○	300	200	297.6	300	197.6	200	1.2	250	0.88
HR/RS/300/225/○	300	225	297.6	300	222.6	225	1.2	250	1.21

○= Select a Finish & Material

Gauge & weights are given for the hot dip galvanized mild steel cable tray, with a standard side wall height of 50mm. Refer to 'Cable Tray Technical Data' for other materials and gauges.

Finishes & Materials:



Supplied with:



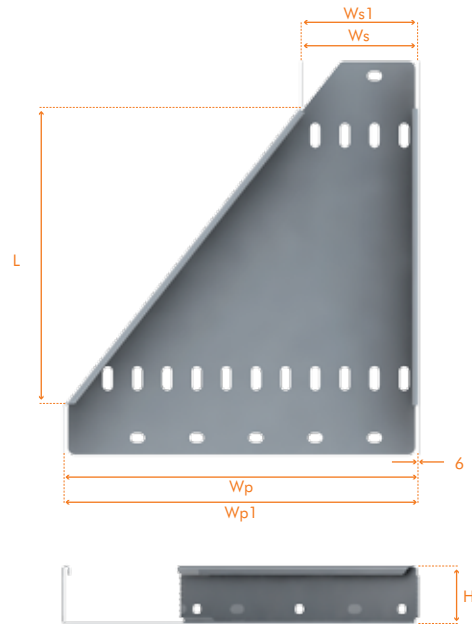
Not Required:



Heavy Duty Left Hand Reducer

Ref. HR/RL

Left hand reducers are used to create offset reductions to suit particular site installation requirements. Left hand reducers have the width reduction on the left when viewed from the primary width.



Part Number	Tray Fitting		Wp mm	Wp1 mm	Ws mm	Ws1 mm	T mm	L mm	Weight (kg)
	Primary width mm	Secondary Width mm							
HR/RL/75/50/○	75	50	73.2	75	48.2	50	0.9	250	0.40
HR/RL/100/50/○	100	50	98.2	100	48.2	50	0.9	250	0.43
HR/RL/100/50/○	100	75	98.2	100	73.2	75			0.49
HR/RL/150/50/○	150	50	148.2	150	48.2	50	0.9	250	0.50
HR/RL/150/75/○	150	75	148.2	150	73.2	75			0.56
HR/RL/150/100/○	150	100	148.2	150	98.2	100			0.58
HR/RL/200/50/○	200	50	197.6	200	47.6	50	1.2	250	0.56
HR/RL/200/75/○	200	75	197.6	200	72.6	75			0.62
HR/RL/200/100/○	200	100	197.6	200	97.6	100			0.64
HR/RL/200/150/○	200	150	197.6	200	147.6	150			0.70
HR/RL/225/50/○	225	50	223.2	225	48.2	50	0.9	250	0.61
HR/RL/225/75/○	225	75	223.2	225	73.2	75			0.66
HR/RL/225/100/○	225	100	223.2	225	98.2	100			0.68
HR/RL/225/150/○	225	150	223.2	225	148.2	150	1.2	250	0.74
HR/RL/225/200/○	225	200	222.6	225	197.6	200			0.78
HR/RL/300/50/○	300	50	298.2	300	48.2	50	0.9	250	0.72
HR/RL/300/75/○	300	75	298.2	300	73.2	75			0.77
HR/RL/300/100/○	300	100	298.2	300	98.2	100			0.80
HR/RL/300/150/○	300	150	298.2	300	148.2	150	1.2	250	0.84
HR/RL/300/200/○	300	200	297.6	300	197.6	200			0.88
HR/RL/300/225/○	300	225	297.6	300	222.6	225			1.20

○ = Select a Finish & Material

Gauge & weights are given for the hot dip galvanized mild steel cable tray, with a standard side wall height of 50mm. Refer to 'Cable Tray Technical Data' for other materials and gauges.

Finishes & Materials:



Supplied with:



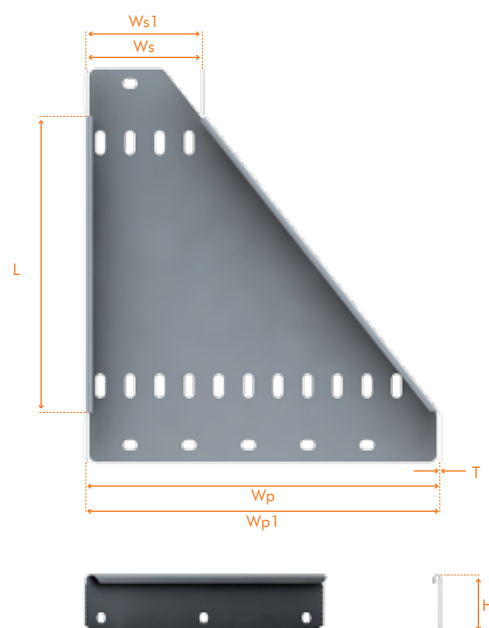
Not Required:



Heavy Duty Right Hand Reducer

Ref. HR/RR

Right hand reducers (RR) are used to create offset reductions to suit particular site installation requirements. Right hand reducers have the width reduction on the right when viewed from the primary width.



Part Number	Tray Fitting		Wp mm	Wp1 mm	Ws mm	Ws1 mm	T mm	L mm	Weight (kg)
	Primary width mm	Secondary Width mm							
HR/RR/75/50/○	75	50	73.2	75	48.2	50	0.9	250	0.40
HR/RR/100/50/○	100	50	98.2	100	48.2	50	0.9	250	0.43
HR/RR/100/75/○	100	75	98.2	100	73.2	75			0.49
HR/RR/150/50/○	150	50	148.2	150	48.2	50	0.9	250	0.50
HR/RR/150/75/○	150	75	148.2	150	73.2	75			0.56
HR/RR/150/100/○	150	100	148.2	150	98.2	100			0.58
HR/RR/200/50/○	200	50	197.6	200	47.6	50	1.2	250	0.56
HR/RR/200/75/○	200	75	197.6	200	72.6	75			0.62
HR/RR/200/100/○	200	100	197.6	200	97.6	100			0.64
HR/RR/200/150/○	200	150	197.6	200	147.6	150			0.70
HR/RR/225/50/○	225	50	223.2	225	48.2	50	0.9	250	0.61
HR/RR/225/75/○	225	75	223.2	225	73.2	75			0.66
HR/RR/225/100/○	225	100	223.2	225	98.2	100			0.68
HR/RR/225/150/○	225	150	223.2	225	148.2	150			0.74
HR/RR/225/200/○	225	200	222.6	225	197.6	200	1.2		0.78
HR/RR/300/50/○	300	50	298.2	300	48.2	50	0.9	250	0.72
HR/RR/300/75/○	300	75	298.2	300	73.2	75			0.77
HR/RR/300/100/○	300	100	298.2	300	98.2	100			0.80
HR/RR/300/150/○	300	150	298.2	300	148.2	150			0.84
HR/RR/300/200/○	300	200	297.6	300	197.6	200	1.2		0.88
HR/RR/300/225/○	300	225	297.6	300	222.6	225			1.20

○ = Select a Finish & Material

Finishes & Materials:



Supplied with:



Not Required:



Gauge & weights are given for the hot dip galvanized mild steel cable tray, with a standard side wall height of 50mm. Refer to 'Cable Tray Technical Data' for other materials and gauges.