

VANTRUNK  
**CABLE-TRAY**



# ***THE FASTEST CABLE TRAY SYSTEM***

**A FULL RANGE OF PERFORATED CABLE TRAY PRODUCTS MANUFACTURED TO THE HIGHEST STANDARDS, OFFERING TIME SAVING AND ADAPTABLE DESIGNS, PRACTICAL SLOT PATTERNS AND VERSATILE ACCESSORIES.**



**Flexible  
Solutions**



**Rapid  
Installation  
Systems**



**Withstands  
extreme  
temperatures  
(-50° to +50°C)**



## CODE SYSTEM EXPLAINED

The information given on these pages should be used as a guide when ordering cable tray, fittings, covers and accessories. For more detailed information and examples refer to the relevant page within the catalogue.

### Straight Cable Tray

System Type	Tray Type	Width	Finish & Material
eg. HR	SL3	50	GA

### Cable Tray Fittings (Include the Radius detail if a non-standard radius fitting is required)

System Type	Fitting Type	Width(s)	Radius	Finish & Material
eg. HR	FE60	50	Omit the radius detail if the standard radius fitting is required	GA

### Cable Tray Accessories

System Type	Accessory Type	Length	Finish & Material
eg. HR	DIV	150	GA

### Straight Cable Tray Covers

System Type	Cover Type	Tray Type	Width	Finish & Material
eg. HR	CC	SL3	50	GA

### Cable Tray Fitting Covers (Include the Radius detail if a non-standard radius fitting is required)

System Type	Cover Type	Fitting Type	Width(s)	Radius	Finish & Material
eg. HR	CC	FE60	50	Omit the radius detail if the standard radius fitting is required	GA

### Couplers

System Type	Coupler Type	Finish & Material
eg. HR	SC	GA

## Finishes and Materials (🔧)

Details on the full range of standard Finishes and Materials are given in the Finish and Materials section (page 26) and Technical Section (page 246).



HOT DIPPED  
GALVANIZED  
VANTRUNK  
MILD STEEL



HOT DIPPED  
GALVANIZED  
VANTRUNK SILICON  
RICH STRUCTURAL  
STEEL



DEEP  
GALVANIZED  
VANTRUNK  
SILICON RICH  
STRUCTURAL  
STEEL



MARINE GRADE  
STAINLESS  
STEEL



## Tray Type Page

MR	Medium duty return flange cable tray	115
HR	Heavy duty return flange cable tray	115

For HR cable tray with side wall heights other than 50mm, suffix the standard HR part number with the required side wall height in mm (30mm to 150mm in 5mm increments).

## Straight Tray Type Page

SL3	Straight tray length, 3m.	115
-----	---------------------------	-----

## Tray Fitting Type Page

FE90	Flat elbow 90°	118
FE60	Flat elbow 60°	118
FE45	Flat elbow 45°	117
FE30	Flat elbow 30°	117
IR	Inside (internal) riser (add 30°, 45°, 60° and 90° as required)	121
OR	Outside (external) riser (add 30°, 45°, 60° and 90° as required)	121
VR	Variable riser	121
ET	Equal tee	123
UT	Unequal tee (quote main width Wm & branch width Wb)	124
EC	Equal cross	127
RS	Straight Reducer (quote primary width Wp & secondary width Ws)	129
RL	Reducer left (quote primary width Wp & secondary width Ws)	130
RR	Reducer right (quote primary width Wp & secondary width Ws)	131

## Width

50:	50mm	300:	300mm
75:	75mm	450:	450mm
100:	100mm	600:	600mm
150:	150mm	750:	750mm
225:	225mm	900:	900mm

## Cover Type Page

CC	Closed cover (plain close-fitting cover)	146
CV	Ventilated cover (plain raised cover)	146
CL	Louvered cover (louvered close-fitting cover)	146

## Radius

The radius is not required for the standard cable tray fitting and cover. The following radii are available to order only.

150:	150mm*
300:	300mm
450:	450mm
600:	600mm

\*Only available for the standard fitting with a 75mm radius.

## Coupler Type Page

SC	Straight coupler (wrap-over type)	133
AC	Adjustable coupler (wrap-over type)	134
FP	Fish Plate Coupler (add width & omit cable tray type)	135

## Accessory Type Page

HDB	Hold down bracket	137
TR/TOP	Conduit take-off plate (add size 20=20mm or 25=25mm)	140
DIV/SL3	Straight tray divider	141
DIV/FLo.6	Tray fitting divider	141
DIV/VR	Tray riser divider	142
EP	End plate	140
EBS/o5	Earth bonding strap	137

Omit cable tray type & width details as necessary.

## Further Guidance

Please contact our Sales Team for further advice and guidance on the correct ordering details for the full range of Vantrunk cable tray, fittings and accessories.

Code Sample: Choose finish

**HOW TO ORDER**

**HR / FE30 / 50 / GA**  
 System Type    Fitting Type    Width    Finish



## STRAIGHT LENGTHS

The Vantrunk Cable Tray System is manufactured in two profiles as standard based around two different side wall heights, each of which gives the cable tray its specific load carrying capabilities.

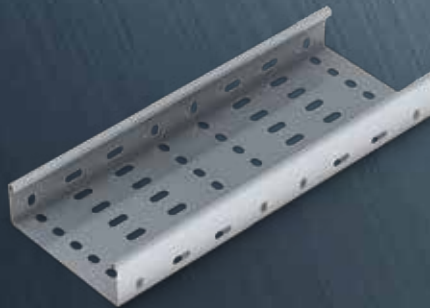
### Medium Duty Return Flange

Cable tray system has a side wall height of 25mm.

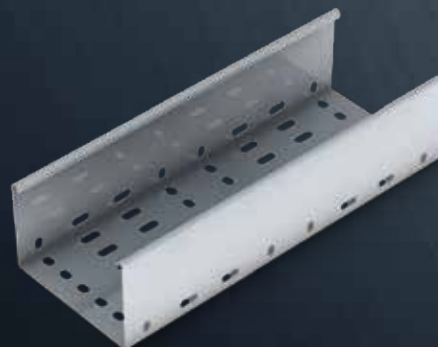


### Heavy Duty Return Flange

Cable tray system has a side wall height of 50mm as standard.



Other sidewall heights from 30mm to 150mm are available to order – consult our Sales Team for details.



For further details on sidewall heights refer to the 'Cable Tray Technical Data' section (page 246) within this catalogue.

ACCREDITED TO THE  
FOLLOWING STANDARD



## STRAIGHT TRAY

Vantrunk cable tray is available in widths from 50mm, to 900mm. The width is measured internally between the side walls.

Vantrunk straight cable tray is available in standard lengths of 3m.

The Vantrunk Cable Tray features a slot pattern which is standard across the range of cable trays. Based on a repeating pattern of 12mm by 8mm width wise slots and 20mm by 8mm length wise, the Vantrunk Cable Tray slot pattern suits cable ties, banding and cable cleats with M6 fixings. See the Cable Tray Technical Section for details

Vantrunk Medium Duty return flange cable tray is suitable for applications where medium duty cable loads are to be supported over short to medium spans.

Vantrunk Heavy Duty return flange cable tray is suitable for applications where heavy duty cable loads are to be supported over longer spans.

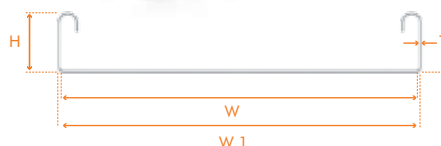
### Medium Duty Return Flange Straight Tray

Ref. MR/SL3

Gauge & weights are given for the hot dip galvanized mild steel cable tray. Refer to 'Technical Data' for other materials and gauges.

Part Number	Tray Width mm	W mm	W1 mm	H mm	T mm	Weight (kg)
MR/SL3/50/○	50	50	51.8	25	0.9	2.48
MR/SL3/75/○	75	75	76.8			3.00
MR/SL3/100/○	100	100	101.8			3.52
MR/SL3/150/○	150	150	151.8			4.56
MR/SL3/200/○	200	200	201.8			5.60
MR/SL3/225/○	225	225	226.8			6.12
MR/SL3/300/○	300	300	302.4		1.2	10.24

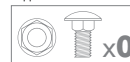
○ = Select a Finish & Material



Finishes & Materials:



Supplied with:



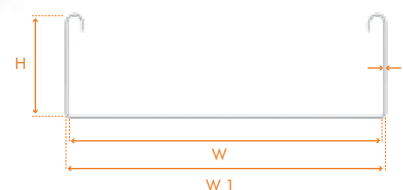
### Heavy Duty Return Flange Straight Tray

Ref. HR/SL3

Gauge & weights are given for the hot dip galvanized mild steel cable tray, with a standard side wall height of 50mm. Refer to 'Cable Tray Technical Data' for other materials and gauges.

Part Number	Tray Width mm	W mm	W1 mm	H mm	T mm	Weight kg
HR/SL3/50/○	50	50	51.8	50	0.9	3.61
HR/SL3/75/○	75	75	76.8			4.13
HR/SL3/100/○	100	100	101.8			4.65
HR/SL3/150/○	150	150	151.8			5.69
HR/SL3/200/○	200	200	202.4			8.97
HR/SL3/225/○	225	225	227.4			9.67
HR/SL3/300/○	300	300	302.4		1.2	11.74

○ = Select a Finish & Material



Finishes & Materials:



Supplied with:

